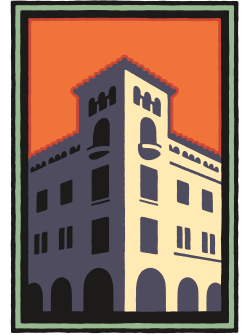


FOR LEASE

1027B Alma Street, Palo Alto, CA



**PREMIER
PROPERTIES**
COMMERCIAL
REAL ESTATE



DOWNTOWN PALO ALTO OFFICE FOR LEASE

±1,725 Sq. Ft. - Available May 1, 2020

BRAD EHIKIAN
Partner

Phone: 650.618.3001
brad.ehikian@prprop.com
dre license #01736391

JON GOLDMAN
Partner

Phone: 650.618.3003
jon.goldman@prprop.com
dre license #01295503

JESSE EBNER
Associate

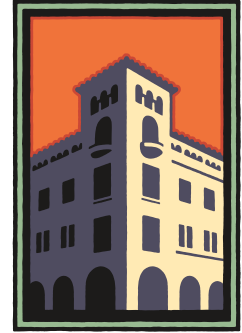
Phone: 650.618.3017
jesse.ebner@prprop.com
dre license #02055989

FOR PROPERTY DETAILS AND MORE LISTINGS

PremierPaloAlto.com

FOR LEASE

1027B Alma Street, Palo Alto, CA



**PREMIER
PROPERTIES**
COMMERCIAL
REAL ESTATE

PROPERTY DESCRIPTION

- Modern, High-End Interior Finishes
- Exposed Ceiling, Ductwork, & Concrete Floors
- Large, Open Layout with Two Conference / Meeting Rooms
- Kitchenette with Built-In Dishwasher
- Floor-To-Ceiling Windows & Abundant Natural Light
- Free On-Site Parking
- High Ceilings
- Paver Patio Recently Installed at Entry
- Access to Downtown Palo Alto and Town & Country Shopping Center Amenities
- Walking Distance to Caltrain Station
- Available May 1, 2020

Neither the property owner nor Premier Property Management make any representation or warranty with regard to the information contained within this advertising flyer and the information contained herein should not be relied upon for validity, accuracy, or completeness. Prior to submitting an offer, prospective purchasers or tenants should perform their own due diligence including consultation with their legal and tax counsel in order to arrive at an independent evaluation of the property.

BRAD EHIKIAN
Partner

Phone: 650.618.3001
brad.ehikian@prprop.com
dre license #01736391

JON GOLDMAN
Partner

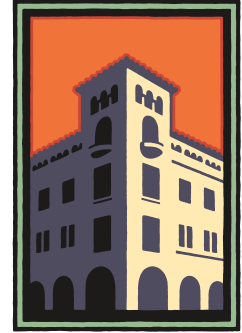
Phone: 650.618.3003
jon.goldman@prprop.com
dre license #01295503

JESSE EBNER
Associate

Phone: 650.618.3017
jesse.ebner@prprop.com
dre license #02055989

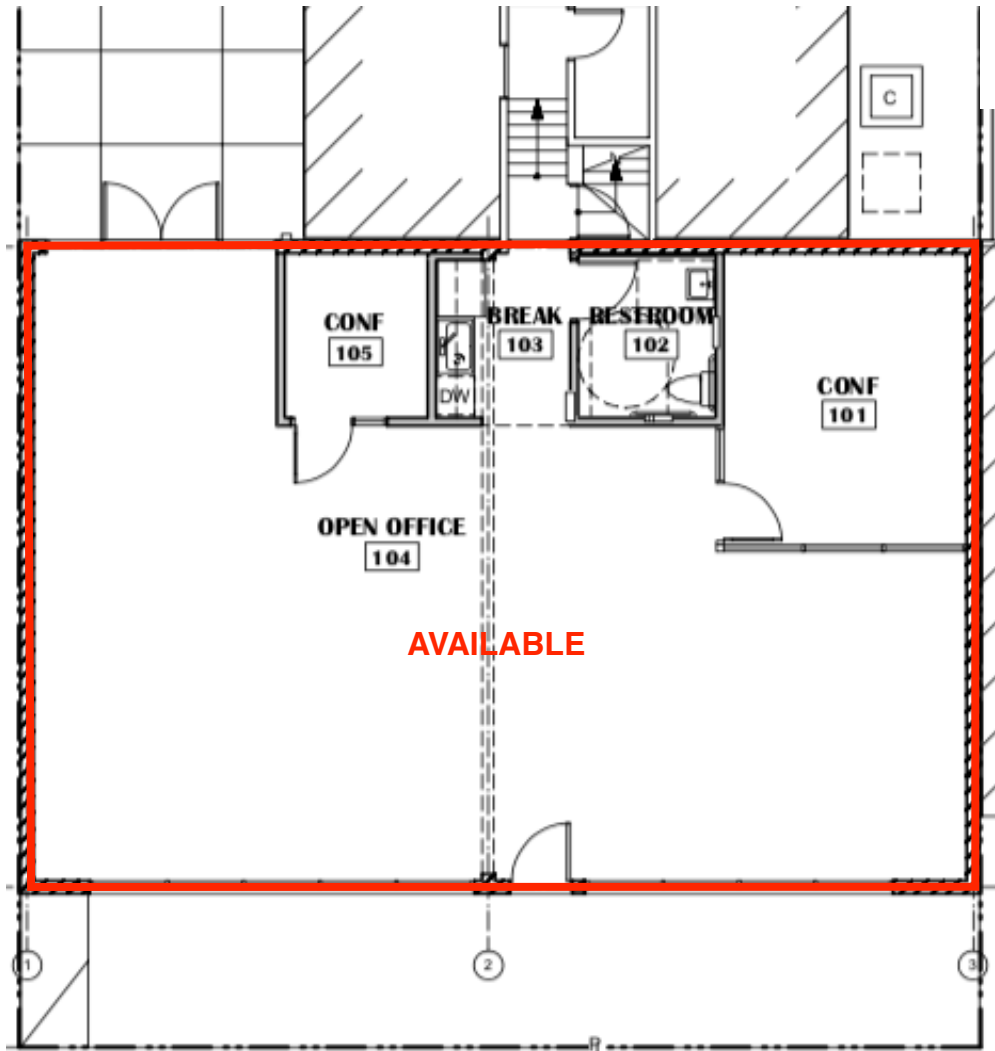
FOR LEASE

1027B Alma Street, Palo Alto, CA



**PREMIER
PROPERTIES**
COMMERCIAL
REAL ESTATE

FLOOR PLAN



May not be accurate / to scale

BRAD EHIKIAN
Partner

Phone: 650.618.3001
brad.ehikian@prprop.com
dre license #01736391

JON GOLDMAN
Partner

Phone: 650.618.3003
jon.goldman@prprop.com
dre license #01295503

JESSE EBNER
Associate

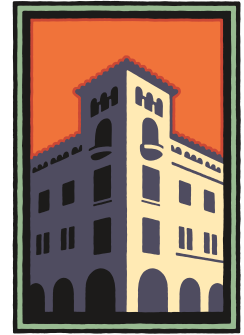
Phone: 650.618.3017
jesse.ebner@prprop.com
dre license #02055989

FOR PROPERTY DETAILS AND MORE LISTINGS

PremierPaloAlto.com

FOR LEASE

1027B Alma Street, Palo Alto, CA



**PREMIER
PROPERTIES**
COMMERCIAL
REAL ESTATE



BRAD EHIKIAN
Partner

Phone: 650.618.3001
brad.ehikian@prprop.com
dre license #01736391

JON GOLDMAN
Partner

Phone: 650.618.3003
jon.goldman@prprop.com
dre license #01295503

JESSE EBNER
Associate

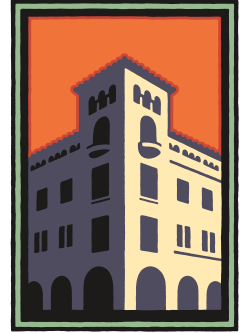
Phone: 650.618.3017
jesse.ebner@prprop.com
dre license #02055989

FOR PROPERTY DETAILS AND MORE LISTINGS

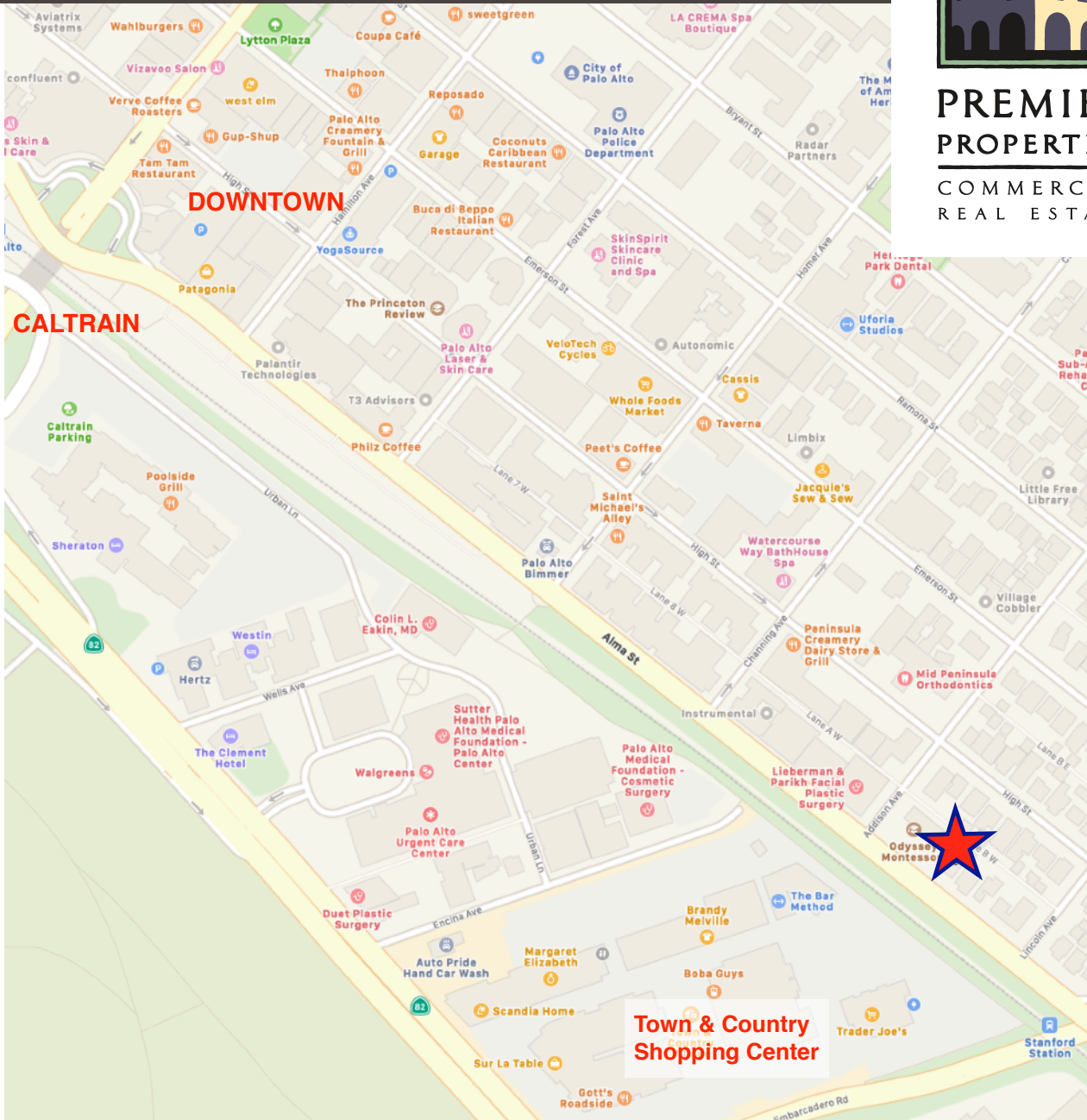
PremierPaloAlto.com

FOR LEASE

1027B Alma Street, Palo Alto, CA



**PREMIER
PROPERTIES**
COMMERCIAL
REAL ESTATE



BRAD EHIKIAN
Partner

Phone: 650.618.3001
brad.ehikian@prprop.com
dre license #01736391

JON GOLDMAN
Partner

Phone: 650.618.3003
jon.goldman@prprop.com
dre license #01295503

JESSE EBNER
Associate

Phone: 650.618.3017
jesse.ebner@prprop.com
dre license #02055989

FOR PROPERTY DETAILS AND MORE LISTINGS

PremierPaloAlto.com