

FOR LEASE

575 HIGH STREET, PALO ALTO, CA

SUITE 200: ±6,796 SQ. FT. OFFICE

575 HIGH STREET, PALO ALTO, CA



**PREMIER
PROPERTIES**
COMMERCIAL
REAL ESTATE

BRAD EHIKIAN

Partner
dre license #01736391
| 650.618.3001
| brad.ehikian@prprop.com

JON GOLDMAN

Partner
dre license #01295503
| 650.618.3003
| jon.goldman@prprop.com

JESSE EBNER

Vice President
dre license #02055989
| 650.618.3017
| jesse.ebner@prprop.com

PROPERTY DESCRIPTION

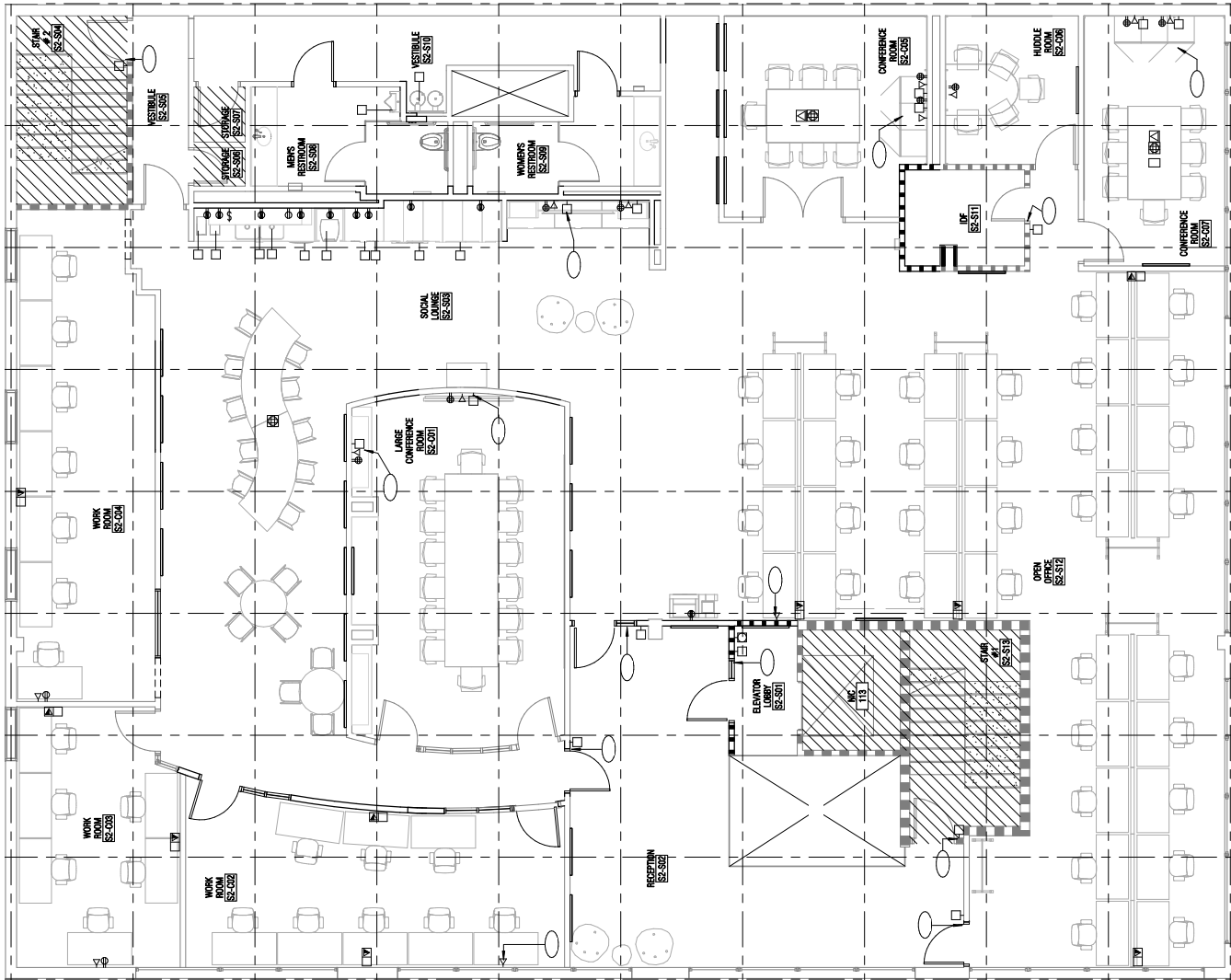
- Class A Building with Prime Downtown Palo Alto Location
- Fully-Furnished, Full-Floor Office Suite
- Completely Renovated with Beautiful Improvements in 2017
- High Quality Finishes Throughout
- Excellent Window Line Provides Great Natural Light
- Elevator Access
- Large Boardroom and Three Conference Rooms
- Three Additional Work Rooms Could be Used as Conference Rooms
- In-Suite Kitchenette, Restrooms, and Bike Storage
- One Block from Caltrain Station
- Surrounded by Downtown Amenities & Restaurants
- Available Immediately
- Pilates Studio on Ground Floor of Building

575 HIGH STREET, PALO ALTO, CA



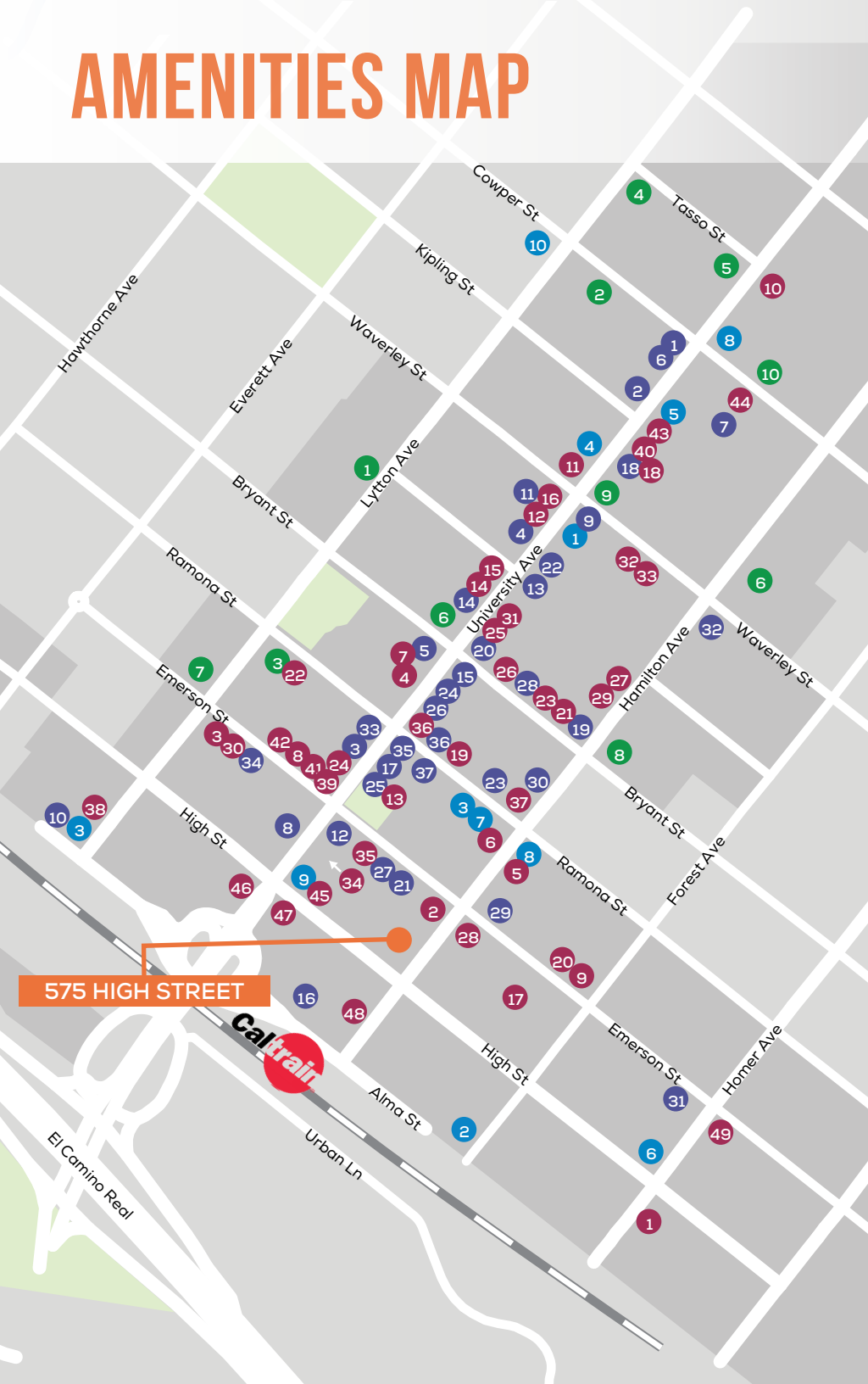
575 HIGH STREET, PALO ALTO, CA

FLOOR PLAN



MAY NOT BE ACCURATE / TO SCALE

AMENITIES MAP



575 HIGH STREET

SHOPPING / SERVICES

- 1 AT&T Store
- 2 Footwear Etc
- 3 Verizon
- 4 Design Within Reach
- 5 Restoration Hardware
- 6 Cielo
- 7 el PRADO Hotel
- 8 Palo Alto Bicycles
- 9 Chico's
- 10 E-bike Annex
- 11 Circa Lighting
- 12 West Elm
- 13 Apple Store
- 14 Brandy Melville
- 15 Keen Garage
- 16 Patagonia
- 17 Vans
- 18 lululemon
- 19 UPS Store
- 20 Artsy Rugs
- 21 Bells Books
- 22 CVS
- 23 Warby Parker
- 24 Lenscrafters
- 25 Nest Bedding
- 26 The Shade Store
- 27 Mac's Smoke Shop
- 28 Timothy Adams
- 29 Rumble Fitness
- 30 Scandia Home
- 31 Whole Foods
- 32 US Postal Service
- 33 Stanford Theatre
- 34 Aquarius Theatre
- 35 Juut Salon
- 36 Edge Hair Salon
- 37 Mansoor Fine Jewelers

RESTAURANTS

- 1 St Michael's Alley
- 2 Palo Alto Creamery
- 3 Evvia
- 4 Orens Hummus
- 5 Reposado
- 6 Osteria Toscana
- 7 Local Union
- 8 Rangoon Ruby
- 9 Pizzeria Delfina
- 10 Tamarine
- 11 Yayoi Palo Alto
- 12 Crepevine
- 13 Pizza My Heart
- 14 La Strada
- 15 Joya
- 16 Cocoa & Butter
- 17 Tacolicious
- 18 Chantal Guillon
- 19 Nola
- 20 Buca di Beppo
- 21 Zola
- 22 Bird Dog
- 23 Ramen Nagi
- 24 Steam
- 25 Curry Pizza House
- 26 Son & Garden
- 27 New York Pizza
- 28 Nobu
- 29 Curry Up Now
- 30 The Patio
- 31 SliderBar
- 32 Ethel's Fancy
- 33 Tai Pan
- 34 Sprout Café
- 35 Bare Bowls
- 36 Salt and Straw
- 37 sweetgreen
- 38 Darbar Indian Cuisine
- 39 Scoop
- 40 Sushirrito
- 41 Jing Jing
- 42 Gelato Classico
- 43 Gyros Gyros
- 44 Il Fornaio
- 45 Sweet Maple
- 46 New York New York Sandwiches
- 47 Arya Steakhouse
- 48 San Agus Cocina Urbana
- 49 Taverna

BANKS

- 1 Heritage Bank of Commerce
- 2 Boston Private
- 3 Comerica Bank
- 4 Bank of America
- 5 Stanford Credit Union
- 6 Wells Fargo
- 7 City National Bank
- 8 Chase Bank
- 9 Union Bank
- 10 Bank of The West




COFFEE

- 1 Starbucks
- 2 Philz Coffee
- 3 Coupa Cafe
- 4 Café Venetia
- 5 Blue Bottle Café
- 6 Peets
- 7 Bistro Maxine
- 8 Joe & the Juice
- 9 Verve
- 10 Mademoiselle Colette

575 HIGH STREET, PALO ALTO, CA

TRANSPORTATION MAP

575 HIGH STREET, PALO ALTO, CA

| | |
|--|---|
| <p> PLANES</p> <p>SJC - 16 miles SFO - 19 miles OAK - 28 miles</p> | <p> TRAINS</p> <p>San Francisco - 58 min Milbrae - 37 min San Jose - 17 min</p> |
| <p> AUTOMOBILES</p> <p>San Francisco - 38 miles Downtown San Jose - 19 miles Downtown Oakland - 34 miles</p> | |

Downtown San Francisco

San Francisco Int. Airport

101

Downtown Redwood City

Bayshore Fwy
(227,900 VPD)

INTERSTATE
280
(122,000 VPD)

Stanford Medical Center

Stanford Shopping Center

Caltrain
Downtown Menlo Park

Sand Hill Rd (31,468 VPD)

El Camino Real (37,300 VPD)
Caltrain Rail Line

Stanford University

Downtown Palo Alto

Palm Dr

Caltrain
Downtown Palo Alto

575 HIGH STREET

University Ave (18,700 VPD)

DEMOGRAPHICS



ONE-MILE POPULATION: 16,986

MEDIAN AGE

42.2

MEDIAN NET WORTH



FAMILIES



PER CAPITA INCOME

108,446



AVERAGE HOUSEHOLD INCOME

\$236,395

Average Household Size: 2.06

Owner Occupied Housing Units: 3,388

Renter Occupied Housing Units: 4,326

Median Household Income: \$178,422

MAJOR EMPLOYERS:

| Data for all businesses in area | 1 mile |
|---|--------|
| Total Businesses: | 2,519 |
| Total Employees: | 33,975 |
| Total Residential Population: | 16,986 |
| Employee/Residential Population Ratio (per 100 Residents) | 200 |

CITY PARKING LOT MAP



FOR LEASE

575 HIGH STREET, PALO ALTO, CA

SUITE 200: ±6,796 SQ. FT. OFFICE



**PREMIER
PROPERTIES**
COMMERCIAL
REAL ESTATE

BRAD EHIKIAN

Partner
dre license #01736391
| 650.618.3001
| brad.ehikian@prprop.com

JON GOLDMAN

Partner
dre license #01295503
| 650.618.3003
| jon.goldman@prprop.com

JESSE EBNER

Vice President
dre license #02055989
| 650.618.3017
| jesse.ebner@prprop.com