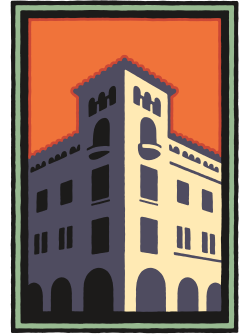


FOR LEASE

719 Santa Cruz Avenue, Menlo Park, CA



**PREMIER
PROPERTIES**
COMMERCIAL
REAL ESTATE



SANTA CRUZ AVE RETAIL FOR LEASE

±5,208 SQ. FT. - Available Immediately

Interior Improvements Underway

BRAD EHIKIAN
Partner

Phone: 650.618.3001
brad.ehikian@prprop.com
dre license #01736391

JON GOLDMAN
Partner

Phone: 650.618.3003
jon.goldman@prprop.com
dre license #01295503

JESSE EBNER
Associate

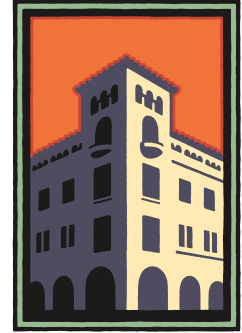
Phone: 650.618.3017
jesse.ebner@prprop.com
dre license #02055989

FOR PROPERTY DETAILS AND MORE LISTINGS

PremierPaloAlto.com

FOR LEASE

719 Santa Cruz Avenue, Menlo Park, CA



**PREMIER
PROPERTIES**
COMMERCIAL
REAL ESTATE

PROPERTY DESCRIPTION

- Excellent Downtown Menlo Park Location
- ±4,752 Sq. Ft. of Ground Floor + 456 Sq. Ft. of Mezzanine
- Renovations Underway to Expose Concrete Floor and Roof Framing
- Huge Floor-to-Ceiling Windows
- Barrel-Vaulted Roof
- Prominent Signage Opportunities on Santa Cruz Ave
- Great Exposure in the Middle of the main street in Downtown
- Rare Single-Tenant Retail Building
- Large, Open Layout
- Available Immediately

BRAD EHIKIAN
Partner

Phone: 650.618.3001
brad.ehikian@prprop.com
dre license #01736391

JON GOLDMAN
Partner

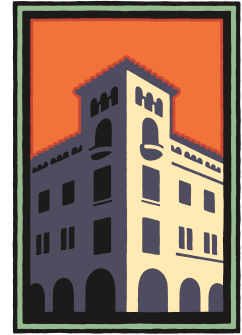
Phone: 650.618.3003
jon.goldman@prprop.com
dre license #01295503

JESSE EBNER
Associate

Phone: 650.618.3017
jesse.ebner@prprop.com
dre license #02055989

FOR LEASE

719 Santa Cruz Avenue, Menlo Park, CA



**PREMIER
PROPERTIES**
COMMERCIAL
REAL ESTATE



Neither the property owner nor Premier Property Management make any representation or warranty with regard to the information contained within this advertising flyer and the information contained herein should not be relied upon for validity, accuracy, or completeness. Prior to submitting an offer, prospective purchasers or tenants should perform their own due diligence including consultation with their legal and tax counsel in order to arrive at an independent evaluation of the property.

BRAD EHIKIAN
Partner

Phone: 650.618.3001
brad.ehikian@prprop.com
dre license #01736391

JON GOLDMAN
Partner

Phone: 650.618.3003
jon.goldman@prprop.com
dre license #01295503

JESSE EBNER
Associate

Phone: 650.618.3017
jesse.ebner@prprop.com
dre license #02055989

FOR PROPERTY DETAILS AND MORE LISTINGS

PremierPaloAlto.com

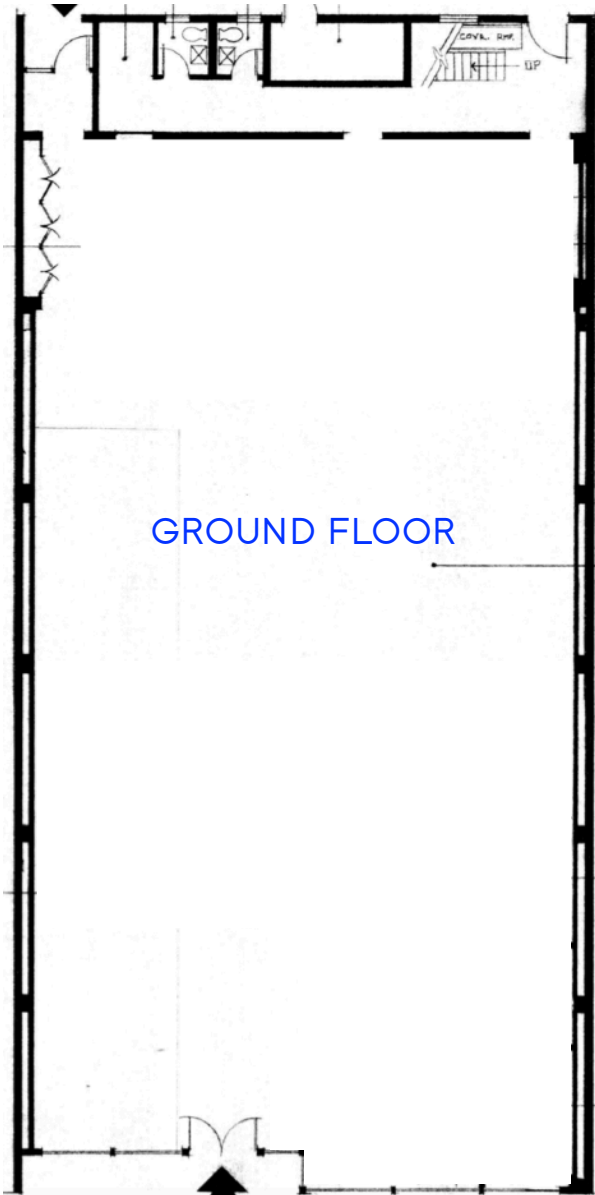
FOR LEASE

719 Santa Cruz Avenue, Menlo Park, CA

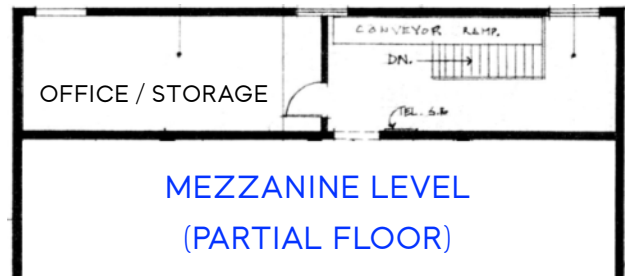


**PREMIER
PROPERTIES**
COMMERCIAL
REAL ESTATE

FLOOR PLAN



GROUND FLOOR



MEZZANINE LEVEL
(PARTIAL FLOOR)

SANTA CRUZ AVENUE

MAY NOT BE ACCURATE / TO SCALE

BRAD EHIKIAN
Partner

Phone: 650.618.3001
brad.ehikian@prprop.com
dre license #01736391

JON GOLDMAN
Partner

Phone: 650.618.3003
jon.goldman@prprop.com
dre license #01295503

JESSE EBNER
Associate

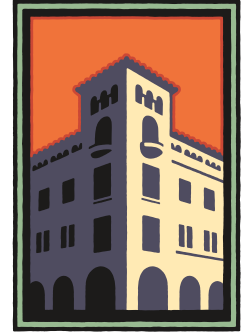
Phone: 650.618.3017
jesse.ebner@prprop.com
dre license #02055989

FOR PROPERTY DETAILS AND MORE LISTINGS

PremierPaloAlto.com

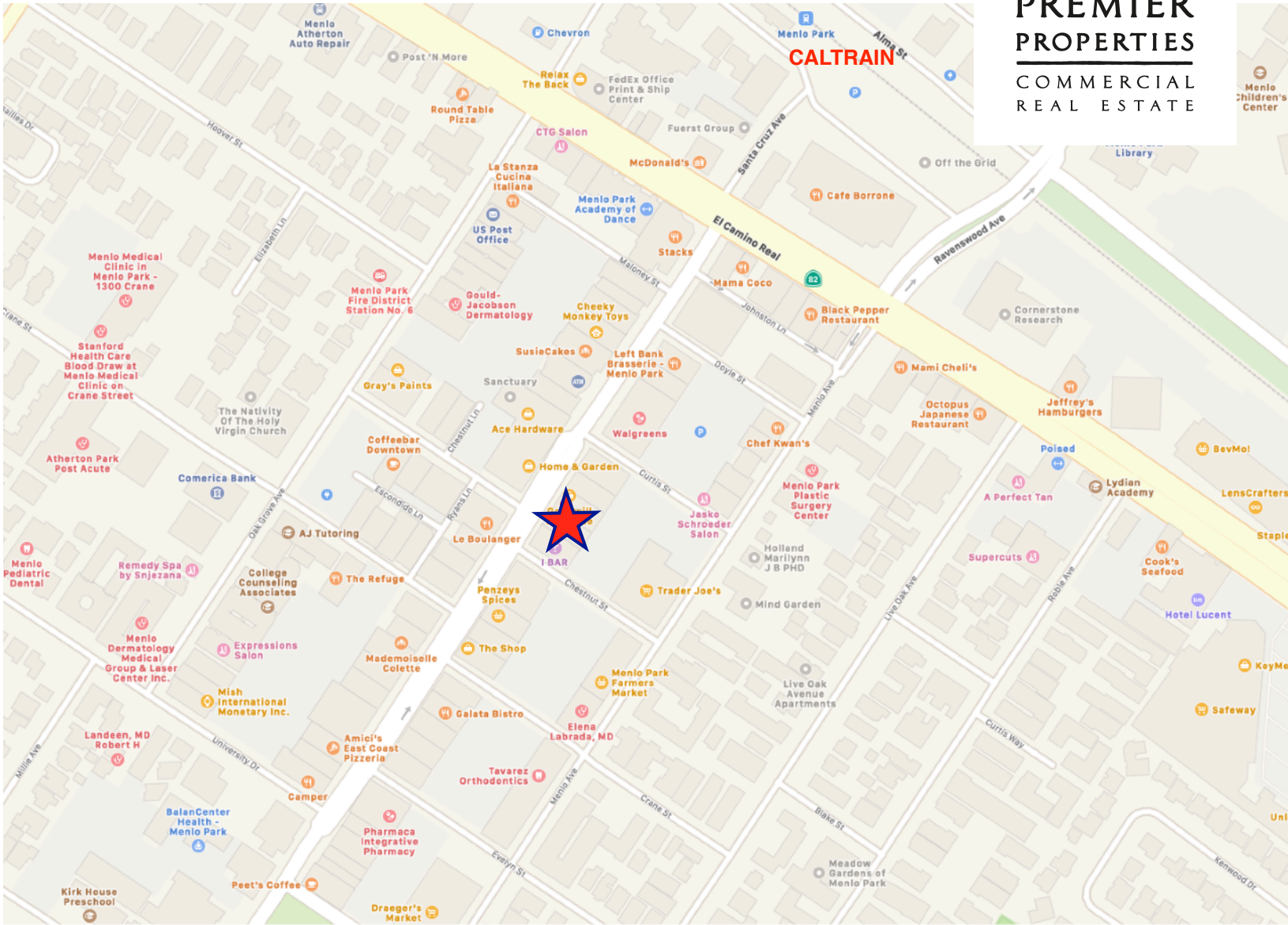
FOR LEASE

719 Santa Cruz Avenue, Menlo Park, CA



**PREMIER
PROPERTIES**
COMMERCIAL
REAL ESTATE

MAP



BRAD EHIKIAN
Partner

Phone: 650.618.3001
brad.ehikian@prprop.com
dre license #01736391

JON GOLDMAN
Partner

Phone: 650.618.3003
jon.goldman@prprop.com
dre license #01295503

JESSE EBNER
Associate

Phone: 650.618.3017
jesse.ebner@prprop.com
dre license #02055989

FOR PROPERTY DETAILS AND MORE LISTINGS

PremierPaloAlto.com