



**PREMIER  
PROPERTIES**  
COMMERCIAL  
REAL ESTATE

# FOR LEASE

## 721 COLORADO AVE

Palo Alto, CA

Suite 101: ±2,000 Sq. Ft. Office



### BRAD EHIKIAN

Partner

dre license #01736391

☎ | 650.618.3001

✉ | [brad.ehikian@prprop.com](mailto:brad.ehikian@prprop.com)

### JON GOLDMAN

Partner

dre license #01295503

☎ | 650.618.3003

✉ | [jon.goldman@prprop.com](mailto:jon.goldman@prprop.com)

### JESSE EBNER

Vice President

dre license #02055989

☎ | 650.618.3017

✉ | [jesse.ebner@prprop.com](mailto:jesse.ebner@prprop.com)

# PROPERTY DESCRIPTION

- Unique Ground Floor Office Available
- Excellent Location in Midtown Palo Alto
- Six (6) Private Offices / Conference Rooms
- Large Kitchen / Break Room
- Adjacent to Public Parking Lot
- Walking Distance to Restaurants & Amenities
- Easy Access to Oregon Expy and U.S. 101
- Available Immediately

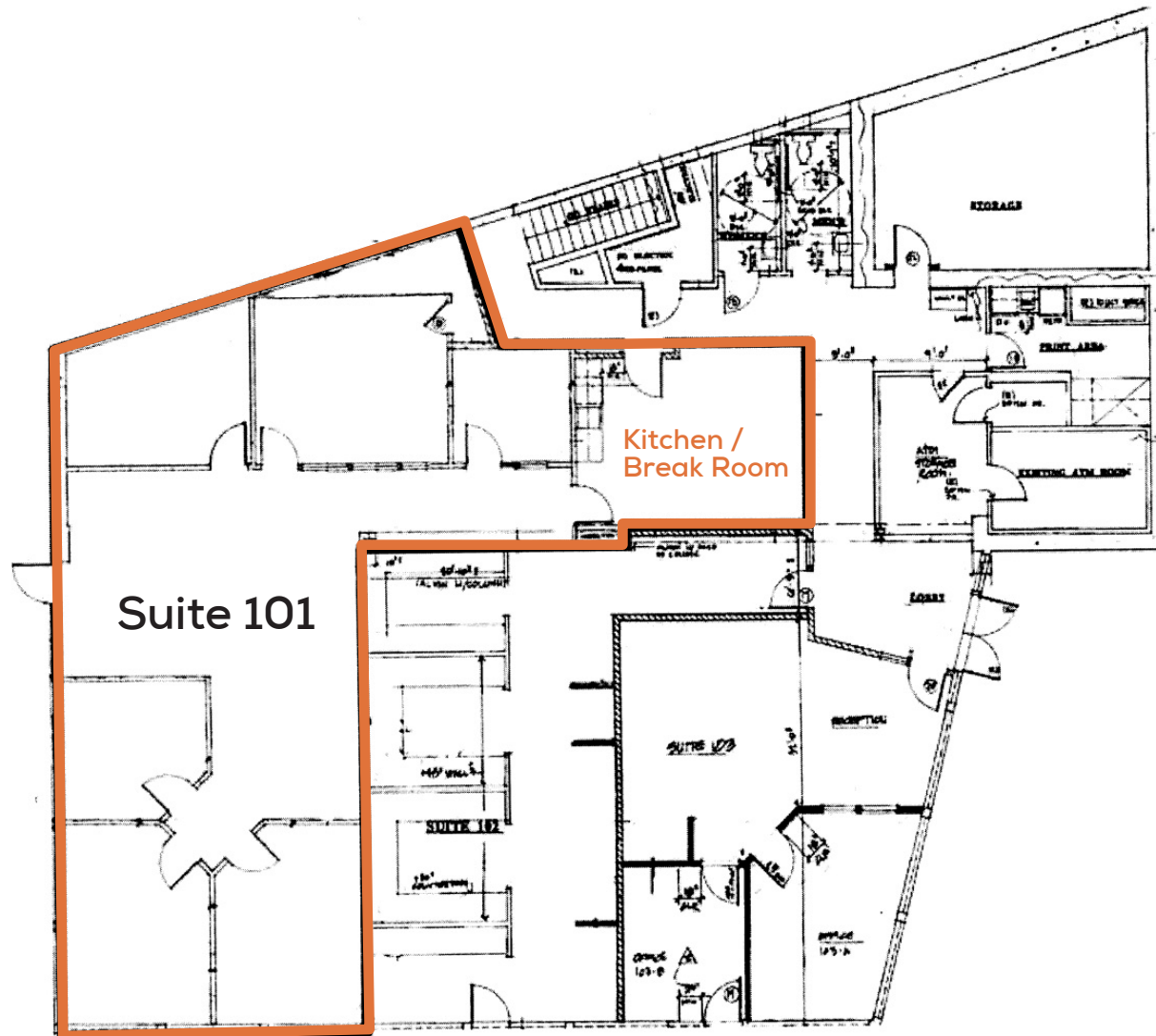


**BRAD EHIKIAN**  
Partner  
dre license #01736391  
☎ | 650.618.3001  
✉ | brad.ehikian@prprop.com

**JON GOLDMAN**  
Partner  
dre license #01295503  
☎ | 650.618.3003  
✉ | jon.goldman@prprop.com

**JESSE EBNER**  
Vice President  
dre license #02055989  
☎ | 650.618.3017  
✉ | jesse.ebner@prprop.com

# FLOOR PLAN

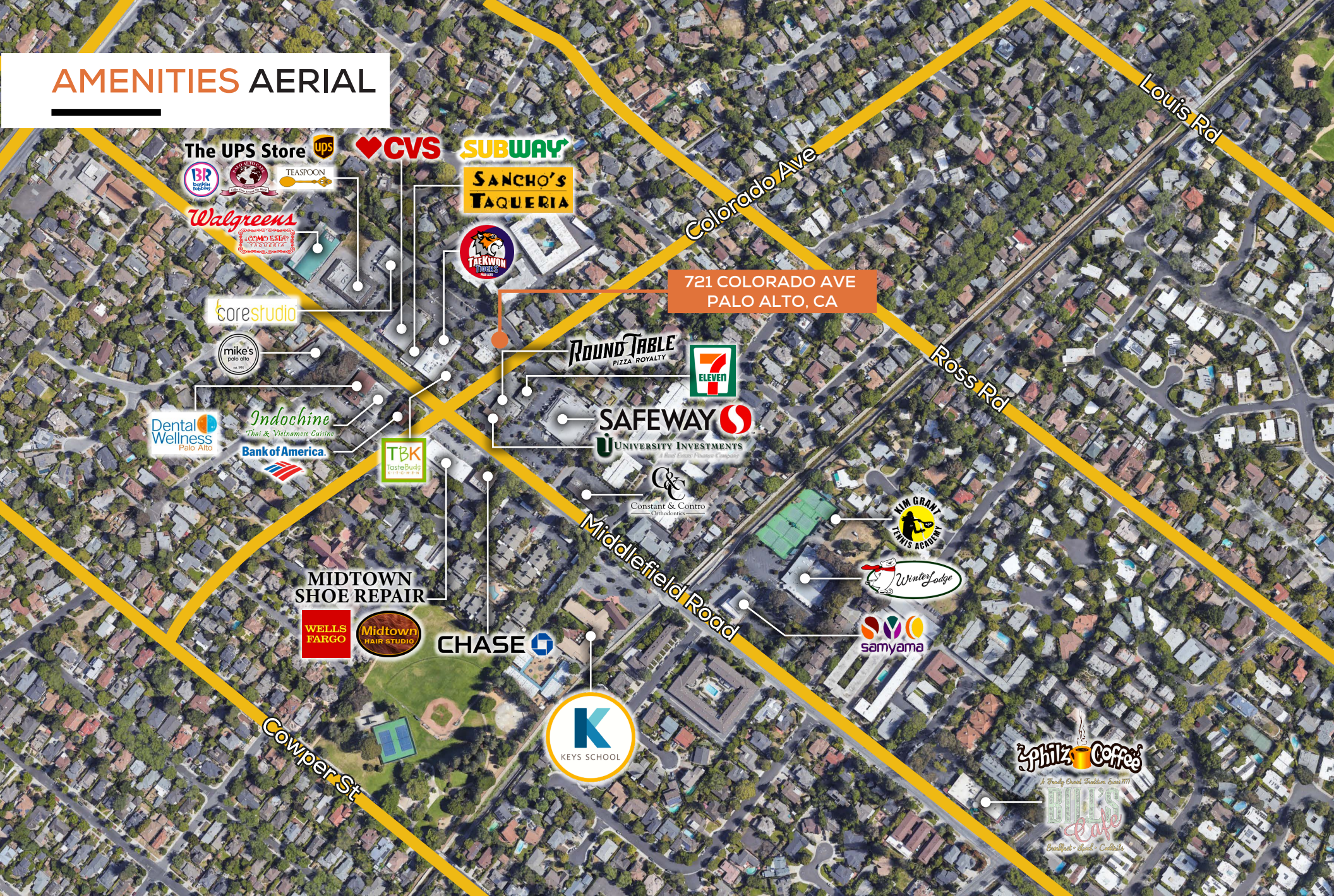


**BRAD EHIKIAN**  
Partner  
dre license #01736391  
☎ | 650.618.3001  
✉ | brad.ehikian@prprop.com

**JON GOLDMAN**  
Partner  
dre license #01295503  
☎ | 650.618.3003  
✉ | jon.goldman@prprop.com

**JESSE EBNER**  
Vice President  
dre license #02055989  
☎ | 650.618.3017  
✉ | jesse.ebner@prprop.com

# AMENITIES AERIAL



**BRAD EHIKIAN**  
Partner  
dre license #01736391  
☎ | 650.618.3001  
✉ | brad.ehikian@prprop.com

**JON GOLDMAN**  
Partner  
dre license #01295503  
☎ | 650.618.3003  
✉ | jon.goldman@prprop.com

**JESSE EBNER**  
Vice President  
dre license #02055989  
☎ | 650.618.3017  
✉ | jesse.ebner@prprop.com