



**PREMIER  
PROPERTIES**  
COMMERCIAL  
REAL ESTATE

# FOR LEASE

## 379 UNIVERSITY AVE

Palo Alto, CA

±4,100 Sq. Ft. Retail

The Real Real

The Real Real

**BRAD EHIKIAN**

Partner

dre license #01736391

📞 | 650.618.3001

✉ | [brad.ehikian@prprop.com](mailto:brad.ehikian@prprop.com)

**JON GOLDMAN**

Partner

dre license #01295503

📞 | 650.618.3003

✉ | [jon.goldman@prprop.com](mailto:jon.goldman@prprop.com)

**JESSE EBNER**

Vice President

dre license #02055989

📞 | 650.618.3017

✉ | [jesse.ebner@prprop.com](mailto:jesse.ebner@prprop.com)



# PROPERTY DESCRIPTION

- ▶ Newly Built Out Retail Space in the Heart of Downtown
- ▶ Currently Built Out as a High-End Retail Showroom
- ▶ Impressive Ceiling Height
- ▶ Huge Storefront Windows
- ▶ Excellent Signage Opportunity on University Ave
- ▶ Abundant Natural Light
- ▶ Class A Retail Building
- ▶ Convenient Rear Entrance on Alley for Deliveries
- ▶ Flexible and Mostly Open Layout
- ▶ Surrounded by Downtown Restaurants and Amenities
- ▶ Available February 1, 2023

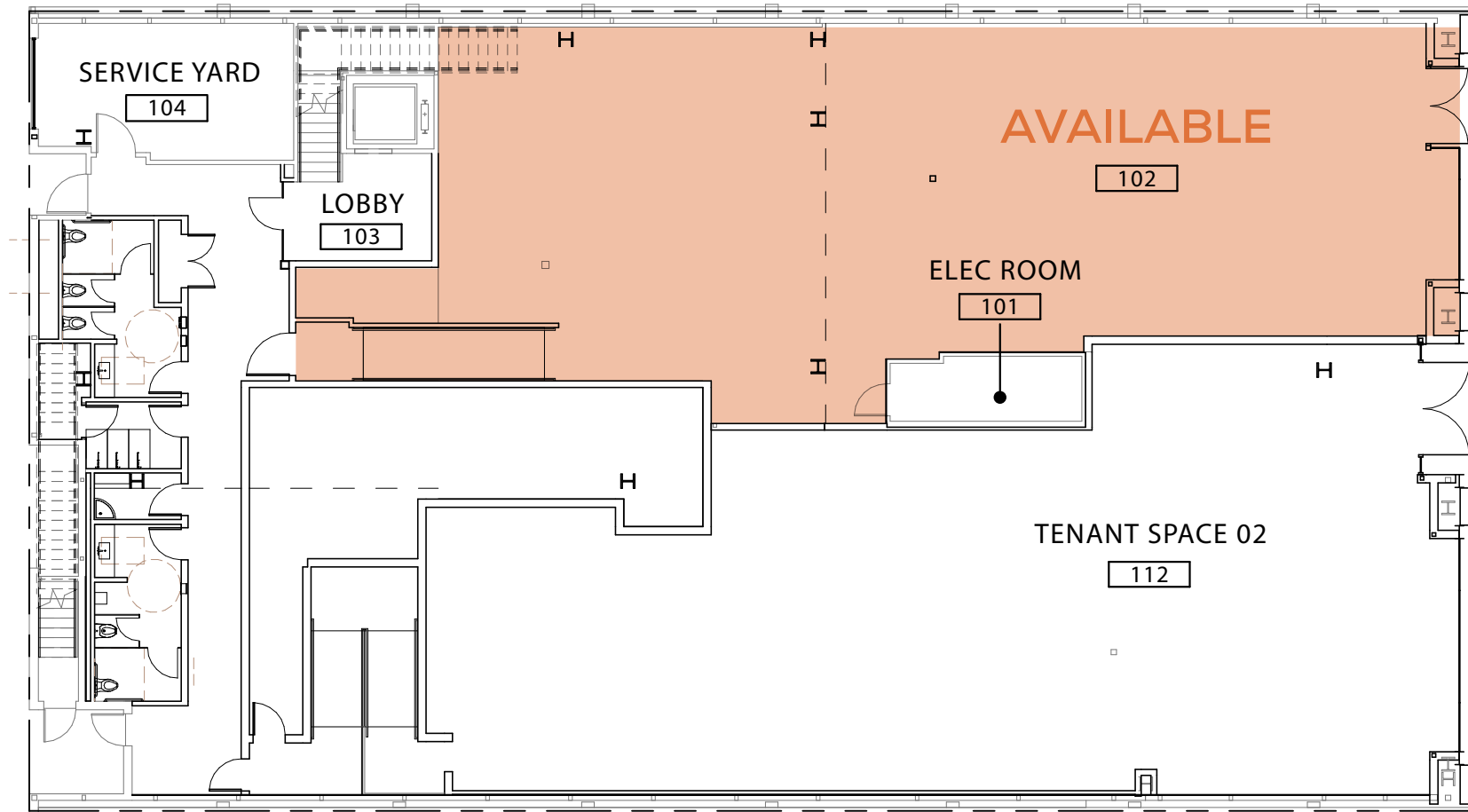


**BRAD EHIKIAN**  
Partner  
dre license #01736391  
📞 | 650.618.3001  
✉ | brad.ehikian@prprop.com

**JON GOLDMAN**  
Partner  
dre license #01295503  
📞 | 650.618.3003  
✉ | jon.goldman@prprop.com

**JESSE EBNER**  
Vice President  
dre license #02055989  
📞 | 650.618.3017  
✉ | jesse.ebner@prprop.com

# FLOOR PLAN

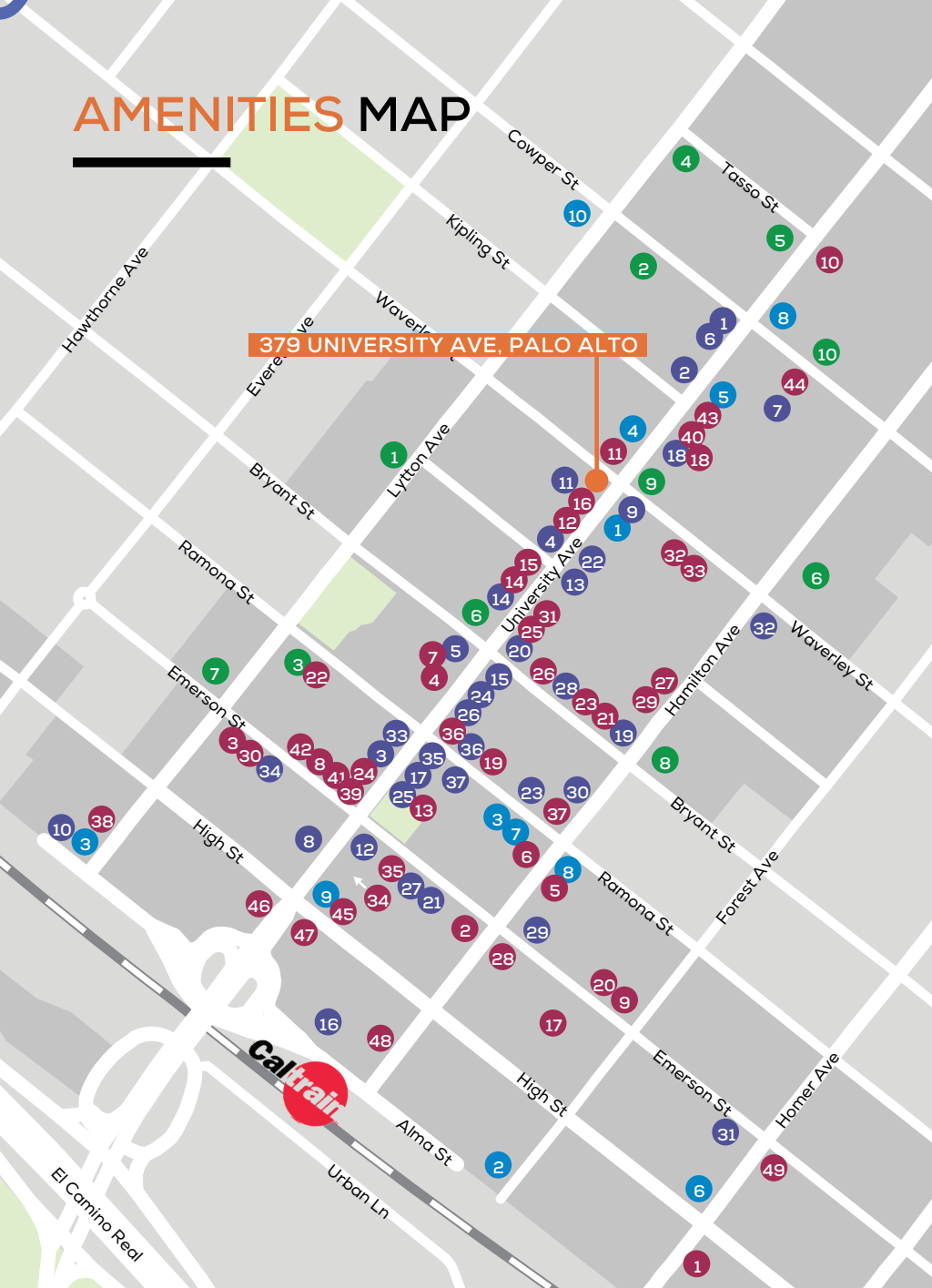


**BRAD EHIKIAN**  
Partner  
dre license #01736391  
☎ | 650.618.3001  
✉ | brad.ehikian@prprop.com

**JON GOLDMAN**  
Partner  
dre license #01295503  
☎ | 650.618.3003  
✉ | jon.goldman@prprop.com

**JESSE EBNER**  
Vice President  
dre license #02055989  
☎ | 650.618.3017  
✉ | jesse.ebner@prprop.com

# AMENITIES MAP



## SHOPPING / SERVICES

- 1 AT&T Store
- 2 Footwear Etc
- 3 Verizon
- 4 Design Within Reach
- 5 Restoration Hardware
- 6 Cielo
- 7 el PRADO Hotel
- 8 Palo Alto Bicycles
- 9 Chico's
- 10 E-bike Annex
- 11 Circa Lighting
- 12 West Elm
- 13 Apple Store
- 14 Brandy Melville
- 15 Keen Garage
- 16 Patagonia
- 17 Vans
- 18 lululemon
- 19 UPS Store
- 20 Artsy Rugs
- 21 Bells Books
- 22 CVS
- 23 Warby Parker
- 24 Lenscrafters
- 25 Nest Bedding
- 26 The Shade Store
- 27 Mac's Smoke Shop
- 28 Timothy Adams
- 29 Rumble Fitness
- 30 Scandia Home
- 31 Whole Foods
- 32 US Postal Service
- 33 Stanford Theatre
- 34 Aquarius Theatre
- 35 Juut Salon
- 36 Edge Hair Salon
- 37 Mansoor Fine Jewelers

## RESTAURANTS

- 1 St Michael's Alley
- 2 Palo Alto Creamery
- 3 Evvia
- 4 Orens Hummus
- 5 Reposado
- 6 Osteria Toscana
- 7 Local Union
- 8 Rangoon Ruby
- 9 Pizzeria Delfina
- 10 Tamarine
- 11 Yayoi Palo Alto
- 12 Crepevine
- 13 Pizza My Heart
- 14 La Strada
- 15 Joya
- 16 Cocoa & Butter
- 17 Tacolicious
- 18 Chantal Guillon
- 19 Nola
- 20 Buca di Beppo
- 21 Zola
- 22 Bird Dog
- 23 Ramen Nagi
- 24 Steam
- 25 Curry Pizza House
- 26 Son & Garden
- 27 New York Pizza
- 28 Nobu
- 29 Curry Up Now
- 30 The Patio
- 31 SliderBar
- 32 Ethel's Fancy
- 33 Tai Pan
- 34 Sprout Café
- 35 Bare Bowls
- 36 Salt and Straw
- 37 sweetgreen
- 38 Darbar Indian Cuisine
- 39 Scoop
- 40 Sushirrito
- 41 Jing Jing
- 42 Gelato Classico
- 43 Gyros Gyros
- 44 Il Fornaio
- 45 Sweet Maple
- 46 New York New York Sandwiches
- 47 Arya Steakhouse
- 48 San Agus Cocina Urbana
- 49 Taverna

## BANKS

- 1 Heritage Bank of Commerce
- 2 Boston Private
- 3 Comerica Bank
- 4 Bank of America
- 5 Stanford Credit Union
- 6 Wells Fargo
- 7 City National Bank
- 8 Chase Bank
- 9 Union Bank
- 10 Bank of The West

## COFFEE

- 1 Starbucks
- 2 Philz Coffee
- 3 Coupa Cafe
- 4 Café Venetia
- 5 Blue Bottle Café
- 6 Peets
- 7 Bistro Maxine
- 8 Joe & the Juice
- 9 Verve
- 10 Mademoiselle Colette



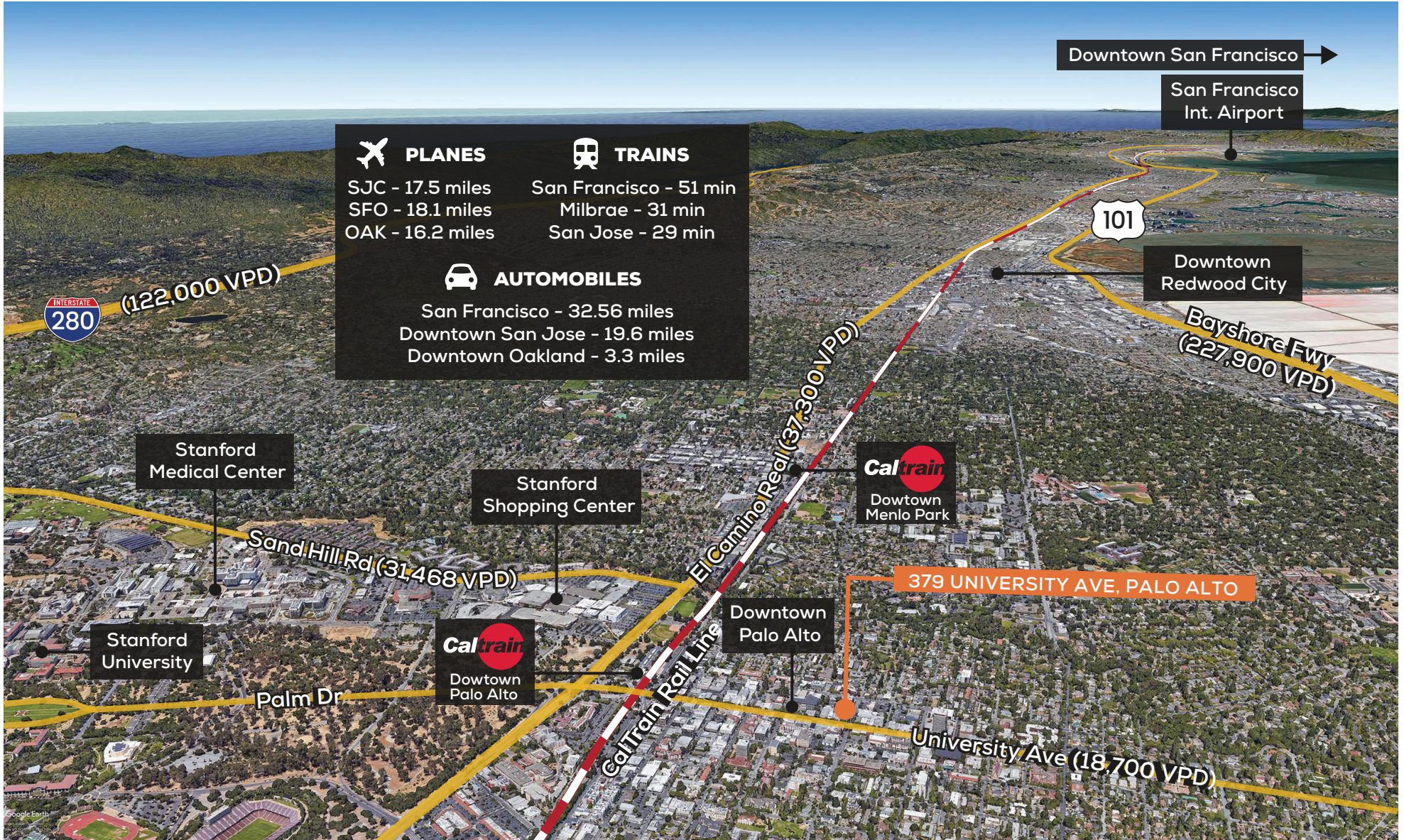
**BRAD EHIKIAN**  
 Partner  
 dre license #01736391  
 ☎ | 650.618.3001  
 ✉ | brad.ehikian@prprop.com

**JON GOLDMAN**  
 Partner  
 dre license #01295503  
 ☎ | 650.618.3003  
 ✉ | jon.goldman@prprop.com

**JESSE EBNER**  
 Vice President  
 dre license #02055989  
 ☎ | 650.618.3017  
 ✉ | jesse.ebner@prprop.com



# TRANSPORTATION AERIAL





# DEMOGRAPHICS



ONE-MILE POPULATION: 19,486

AVERAGE AGE

42.3

HOUSEHOLDS



FAMILIES



FAMILIES

4,136



Median Household Income

\$186,205

Average Household Size: **2.30** | Owner Occupied Housing Units: **3,720** | Renter Occupied Housing Units: **4,596** | Median Household Income: **\$186,205** | Average Household Income: **\$257,301**

## MAJOR EMPLOYERS:

Data for all businesses in area	1 mile	3 miles	5 miles
Total Businesses:	2,634	8,329	14,923
Total Employees:	36,003	132,693	220,911
Total Residential Population:	19,486	156,465	281,877
Employee/Residential Population Ratio (per 100 Residents)	185	85	78



**BRAD EHIKIAN**  
Partner  
dre license #01736391  
📞 | 650.618.3001  
✉ | brad.ehikian@prprop.com

**JON GOLDMAN**  
Partner  
dre license #01295503  
📞 | 650.618.3003  
✉ | jon.goldman@prprop.com

**JESSE EBNER**  
Vice President  
dre license #02055989  
📞 | 650.618.3017  
✉ | jesse.ebner@prprop.com