



**PREMIER
PROPERTIES**
COMMERCIAL
REAL ESTATE

FOR LEASE

401 FLORENCE STREET

Palo Alto, CA

±2,500 Sq. Ft. Office



BRAD EHIKIAN

Partner

dre license #01736391

☎ | 650.618.3001

✉ | brad.ehikian@prprop.com

JON GOLDMAN

Partner

dre license #01295503

☎ | 650.618.3003

✉ | jon.goldman@prprop.com

JESSE EBNER

Vice President

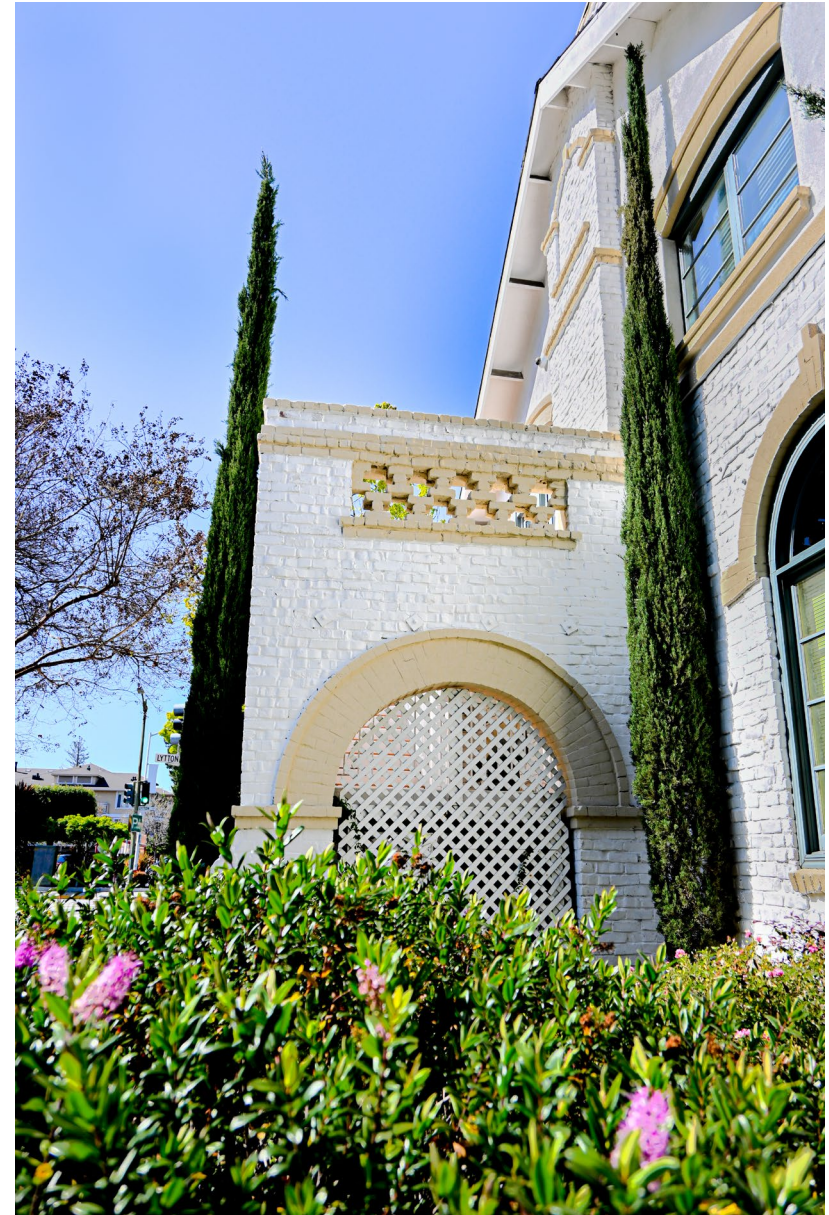
dre license #02055989

☎ | 650.618.3017

✉ | jesse.ebner@prprop.com

PROPERTY DESCRIPTION

- ▶ Historic Building in Downtown Palo Alto
- ▶ Professional Office Build-Out
- ▶ Beautiful Reception Area with Fireplace
- ▶ Five Private Offices / Meeting Rooms
- ▶ One Large Conference Room
- ▶ In-Suite Restrooms
- ▶ Can Be Delivered Fully-Furnished
- ▶ Ideal Professional Space for Family Offices
- ▶ Parking Available in City Garage Less than One Block from Building
- ▶ Walking Distance to CalTrain Station
- ▶ Surrounded by Downtown Restaurants and Amenities
- ▶ Available Immediately

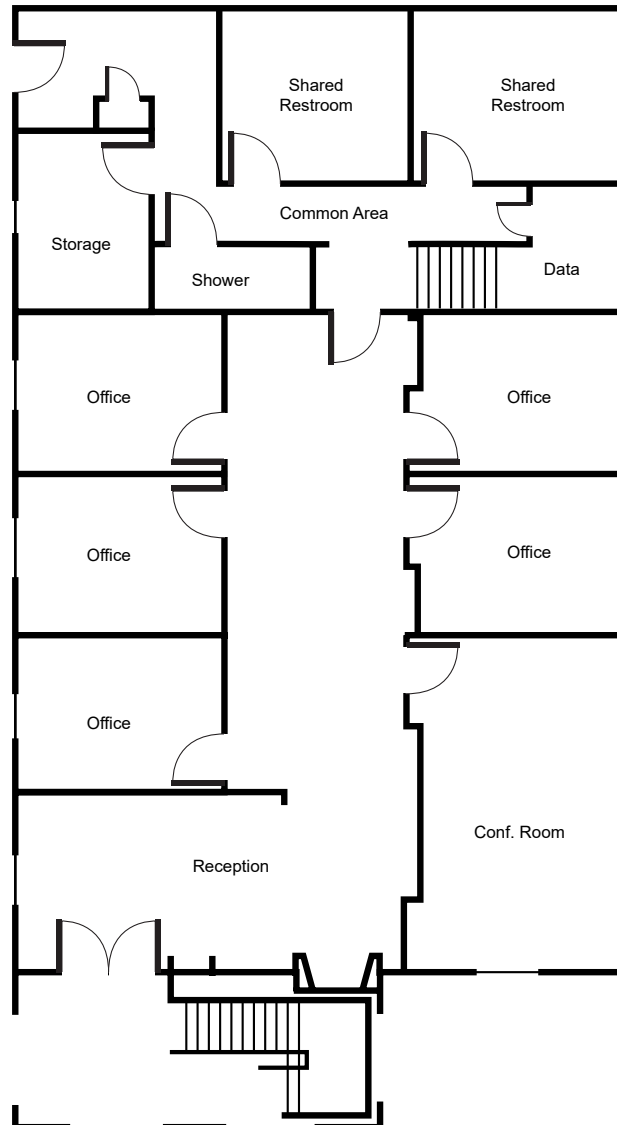


BRAD EHIKIAN
Partner
dre license #01736391
📞 | 650.618.3001
✉ | brad.ehikian@prprop.com

JON GOLDMAN
Partner
dre license #01295503
📞 | 650.618.3003
✉ | jon.goldman@prprop.com

JESSE EBNER
Vice President
dre license #02055989
📞 | 650.618.3017
✉ | jesse.ebner@prprop.com

FLOOR PLAN



BRAD EHIKIAN
Partner
dre license #01736391
☎ | 650.618.3001
✉ | brad.ehikian@prprop.com

JON GOLDMAN
Partner
dre license #01295503
☎ | 650.618.3003
✉ | jon.goldman@prprop.com

JESSE EBNER
Vice President
dre license #02055989
☎ | 650.618.3017
✉ | jesse.ebner@prprop.com

PHOTOS

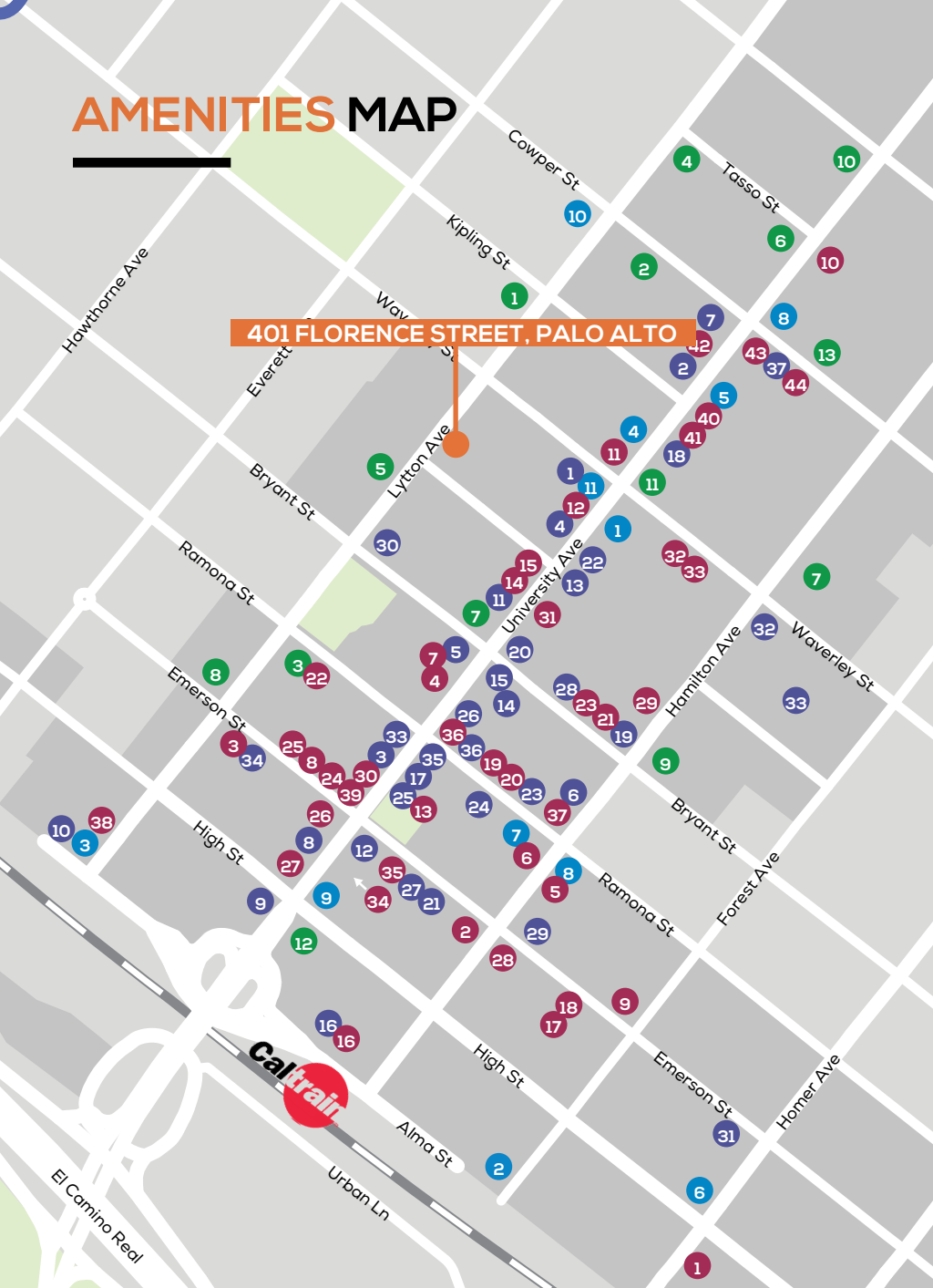


BRAD EHIKIAN
Partner
dre license #01736391
📞 | 650.618.3001
✉ | brad.ehikian@prprop.com

JON GOLDMAN
Partner
dre license #01295503
📞 | 650.618.3003
✉ | jon.goldman@prprop.com

JESSE EBNER
Vice President
dre license #02055989
📞 | 650.618.3017
✉ | jesse.ebner@prprop.com

AMENITIES MAP



401 FLORENCE STREET, PALO ALTO

SHOPPING / SERVICES

- 1 B8ta Palo Alto
- 2 Footwear Etc
- 3 Verizon
- 4 Design Within Reach
- 5 Restoration Hardware
- 6 Shinola
- 7 Sprint Store
- 8 Palo Alto Bicycles
- 9 Natural Mattress Store
- 10 E-bike Annex
- 11 Rejuvenation
- 12 West Elm
- 13 Apple Store
- 14 Jos. A. Banks
- 15 Keen Garage
- 16 Patagonia
- 17 Vans
- 18 lululemon
- 19 UPS Store
- 20 Walgreens
- 21 Bells Books
- 22 CVS
- 23 Warby Parker
- 24 Good Vibrations
- 25 Nest Bedding
- 26 The Shade Store
- 27 Mac's Smoke Shop
- 28 Timothy Adams
- 29 Rumble Fitness
- 30 Form Fitness
- 31 Whole Foods
- 32 US Postal Service
- 33 Stanford Theatre
- 34 Aquarius Theatre
- 35 Juut Salon
- 36 Edge Hair Salon
- 37 Garden Court

RESTAURANTS

- 1 Saint Michael Alley
- 2 Palo Alto Creamery
- 3 Evvia
- 4 Orens Hummus
- 5 Reposado
- 6 Osteria
- 7 Local Union
- 8 Rangoon Ruby
- 9 Pizza Delfina
- 10 Tamarine
- 11 Yayoi Palo Alto
- 12 Crepevine
- 13 Pizza My Heart
- 14 La Strada
- 15 Joya
- 16 Pampas
- 17 Tacolicious
- 18 Dan Gordon's
- 19 Nola
- 20 The Old Pro
- 21 Zola
- 22 Bird Dog
- 23 Ramen Nagi
- 24 Steam
- 25 Patxis
- 26 Wahlburgers
- 27 Lemonade
- 28 Nobu
- 29 Curry Up Now
- 30 Subway
- 31 SliderBar
- 32 Ethlys Fancy
- 33 Tai Pan
- 34 Sprout Café
- 35 Bare Bowls
- 36 Salt and Straw
- 37 sweetgreen
- 38 Darbar Indian Cuisine
- 39 Scoop
- 40 Sushirrito
- 41 Cream
- 42 Cielo
- 43 Gyros Gyros
- 44 Il Fornaio

BANKS

- 1 Avid Bank
- 2 Boston Private
- 3 Comerica Bank
- 4 Bank of America
- 5 Presidio Bank
- 6 Stanford Credit Union
- 7 Wells Fargo
- 8 City National Bank
- 9 Chase Bank
- 10 HSBC Bank
- 11 Union Bank
- 12 E*TRADE Bank
- 13 Bank of The West

COFFEE

- 1 Starbucks
- 2 Philz Coffee
- 3 Coupa Cafe
- 4 Café Venetia
- 5 Blue Bottle Café
- 6 Peets
- 7 Bistro Maxine
- 8 Joe & the Juice
- 9 Verve
- 10 Mademoiselle Colette
- 11 Paris Baguette



**PREMIER
PROPERTIES**
COMMERCIAL
REAL ESTATE

BRAD EHIKIAN

Partner
dre license #01736391
📞 | 650.618.3001
✉ | brad.ehikian@prprop.com

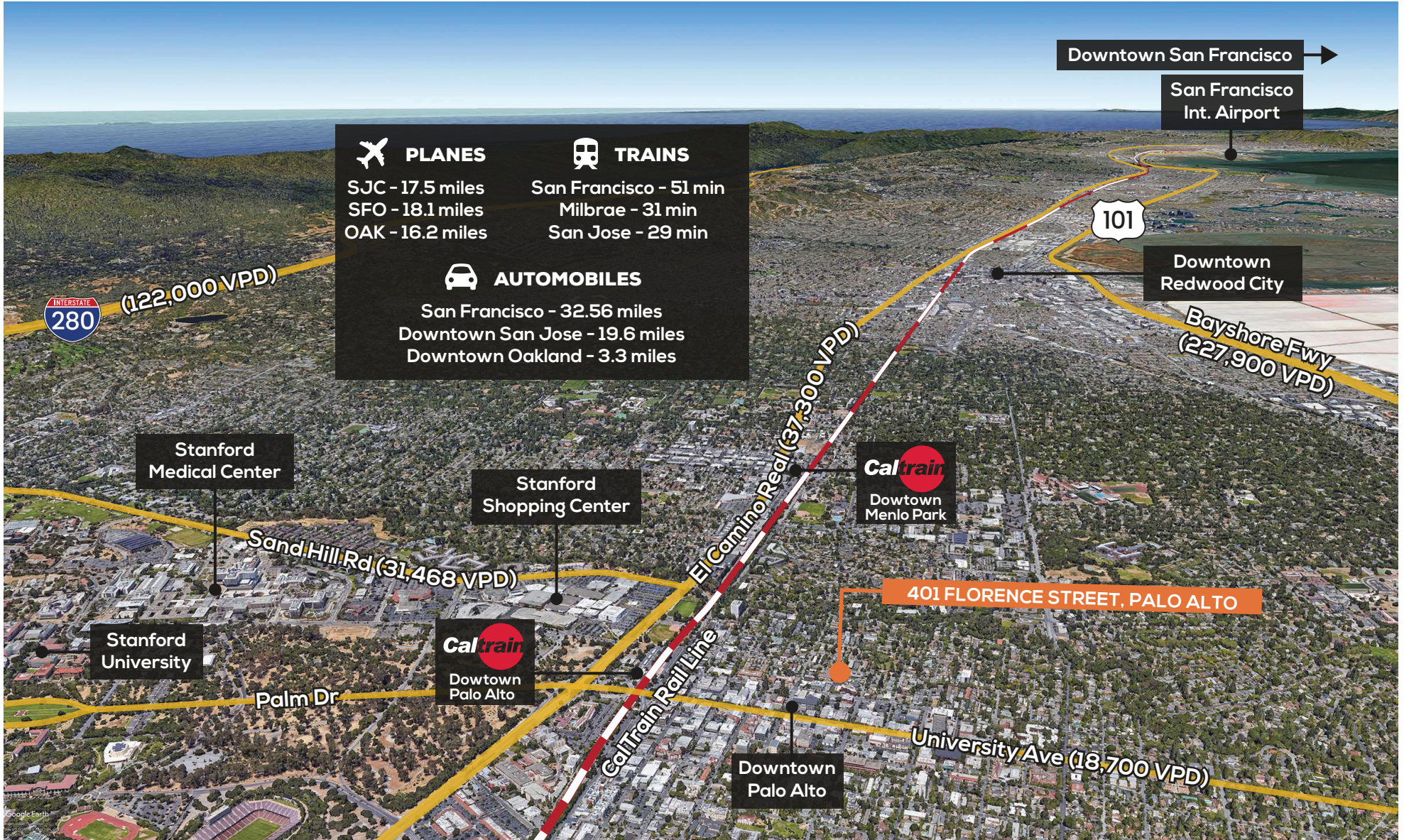
JON GOLDMAN

Partner
dre license #01295503
📞 | 650.618.3003
✉ | jon.goldman@prprop.com

JESSE EBNER

Vice President
dre license #02055989
📞 | 650.618.3017
✉ | jesse.ebner@prprop.com

TRANSPORTATION AERIAL



BRAD EHIKIAN
 Partner
 dre license #01736391
 ☎ | 650.618.3001
 ✉ | brad.ehikian@prprop.com

JON GOLDMAN
 Partner
 dre license #01295503
 ☎ | 650.618.3003
 ✉ | jon.goldman@prprop.com

JESSE EBNER
 Vice President
 dre license #02055989
 ☎ | 650.618.3017
 ✉ | jesse.ebner@prprop.com