



**PREMIER
PROPERTIES**
COMMERCIAL
REAL ESTATE

FOR SUBLEASE

3201-3225 ASH STREET

Palo Alto, CA

±4,700 Sq. Ft. Office



BRAD EHIKIAN

Partner

dre license #01736391

☎ | 650.618.3001

✉ | brad.ehikian@prprop.com

JON GOLDMAN

Partner

dre license #01295503

☎ | 650.618.3003

✉ | jon.goldman@prprop.com

JESSE EBNER

Vice President

dre license #02055989

☎ | 650.618.3017

✉ | jesse.ebner@prprop.com

PROPERTY DESCRIPTION

- ▮ Single-Tenant Office Building
- ▮ 17 On-Site Parking Spaces Available
- ▮ Large Patio / Backyard Break Area
- ▮ Five Private Offices / Meeting Rooms
- ▮ Two Conference Rooms
- ▮ In-Suite Kitchenette & Restrooms
- ▮ LED: 4/30/23

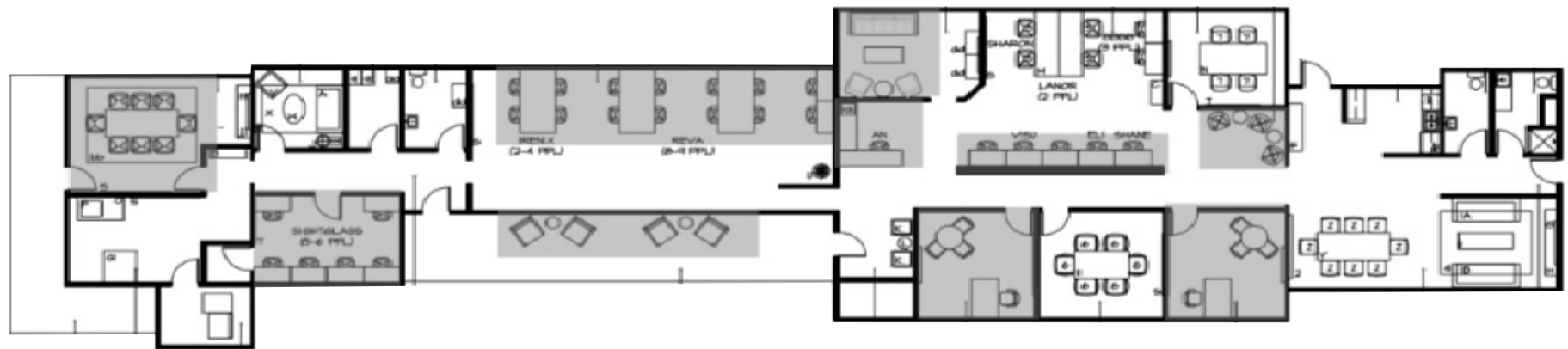


BRAD EHIKIAN
Partner
dre license #01736391
📞 | 650.618.3001
✉ | brad.ehikian@prprop.com

JON GOLDMAN
Partner
dre license #01295503
📞 | 650.618.3003
✉ | jon.goldman@prprop.com

JESSE EBNER
Vice President
dre license #02055989
📞 | 650.618.3017
✉ | jesse.ebner@prprop.com

FLOOR PLAN



BRAD EHIKIAN
Partner
dre license #01736391
☎ | 650.618.3001
✉ | brad.ehikian@prprop.com

JON GOLDMAN
Partner
dre license #01295503
☎ | 650.618.3003
✉ | jon.goldman@prprop.com

JESSE EBNER
Vice President
dre license #02055989
☎ | 650.618.3017
✉ | jesse.ebner@prprop.com

AMENITIES AERIAL



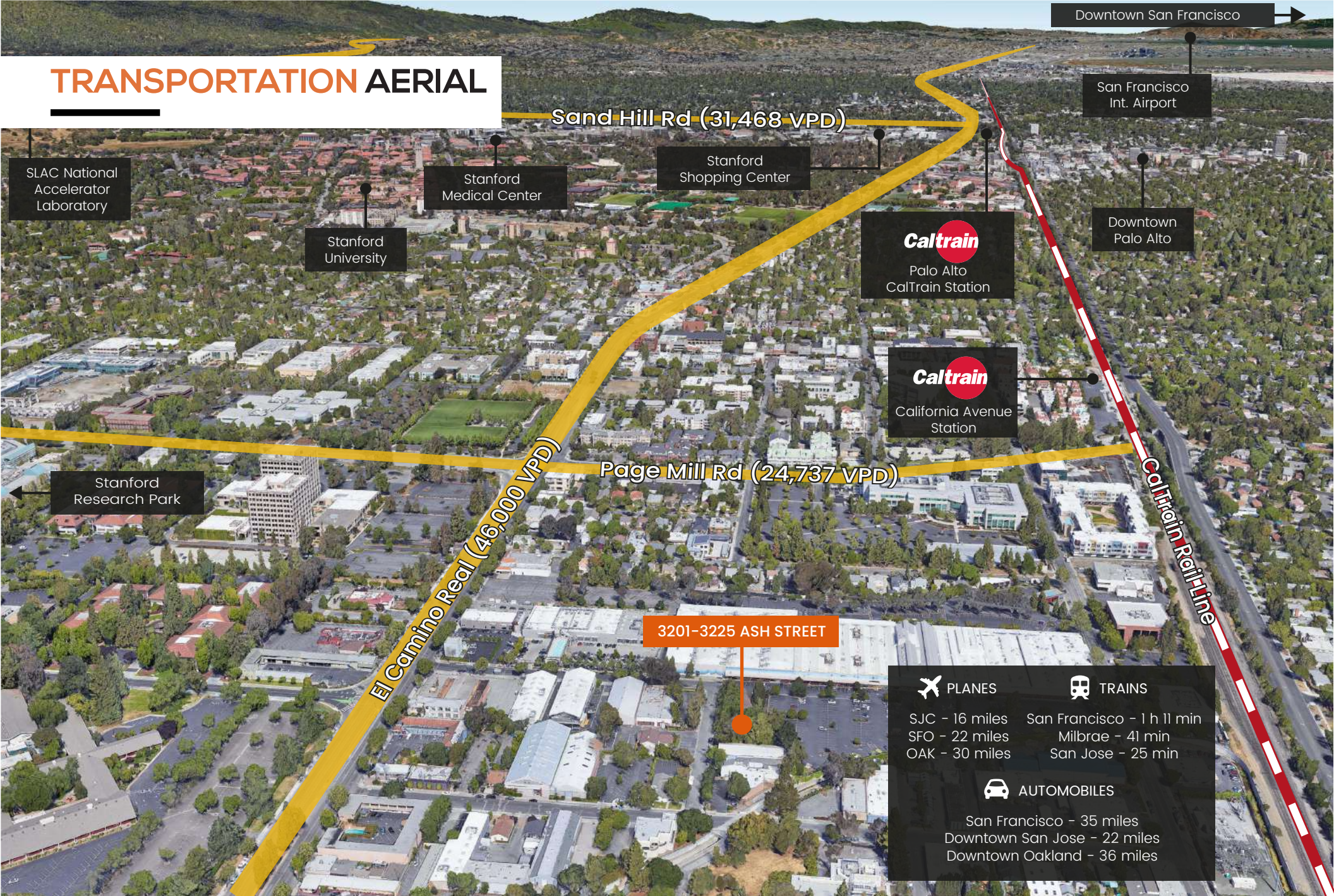
**PREMIER
PROPERTIES**
COMMERCIAL
REAL ESTATE

BRAD EHIKIAN
Partner
dre license #01736391
☎ | 650.618.3001
✉ | brad.ehikian@prprop.com

JON GOLDMAN
Partner
dre license #01295503
☎ | 650.618.3003
✉ | jon.goldman@prprop.com

JESSE EBNER
Vice President
dre license #02055989
☎ | 650.618.3017
✉ | jesse.ebner@prprop.com

TRANSPORTATION AERIAL



Caltrain
Palo Alto
CalTrain Station

Caltrain
California Avenue
Station

PLANES	TRAINS
SJC - 16 miles	San Francisco - 1 h 11 min
SFO - 22 miles	Milbrae - 41 min
OAK - 30 miles	San Jose - 25 min
AUTOMOBILES	
San Francisco - 35 miles	
Downtown San Jose - 22 miles	
Downtown Oakland - 36 miles	



BRAD EHIKIAN
Partner
dre license #01736391
☎ | 650.618.3001
✉ | brad.ehikian@prprop.com

JON GOLDMAN
Partner
dre license #01295503
☎ | 650.618.3003
✉ | jon.goldman@prprop.com

JESSE EBNER
Vice President
dre license #02055989
☎ | 650.618.3017
✉ | jesse.ebner@prprop.com

DEMOGRAPHICS



ONE-MILE POPULATION: 24,039

MEDIAN AGE

39.0

AVERAGE HOUSEHOLD SIZE



FAMILIES



FAMILIES

7,000



Average Household Income

\$215,401

Average Household Size: 2.4 | Owner Occupied Housing Units: 14,420 | Renter Occupied Housing Units: 10,796 | Median Household Income: \$162,669 | Average Household Income: \$215,401

MAJOR EMPLOYERS:

Data for all businesses in area	1 mile
Total Businesses:	1,637
Total Employees:	21,624
Total Residential Population:	23,500
Employee/Residential Population Ratio (per 100 Residents)	99



BRAD EHIKIAN
Partner
dre license #01736391
📞 | 650.618.3001
✉ | brad.ehikian@prprop.com

JON GOLDMAN
Partner
dre license #01295503
📞 | 650.618.3003
✉ | jon.goldman@prprop.com

JESSE EBNER
Vice President
dre license #02055989
📞 | 650.618.3017
✉ | jesse.ebner@prprop.com