



**PREMIER
PROPERTIES**
COMMERCIAL
REAL ESTATE

FOR LEASE

410 SHERMAN AVE

Palo Alto, CA

±6,849 Sq. Ft. Office



410

BRAD EHIKIAN

Partner
dre license #01736391
📞 | 650.618.3001
✉ | brad.ehikian@prprop.com

JON GOLDMAN

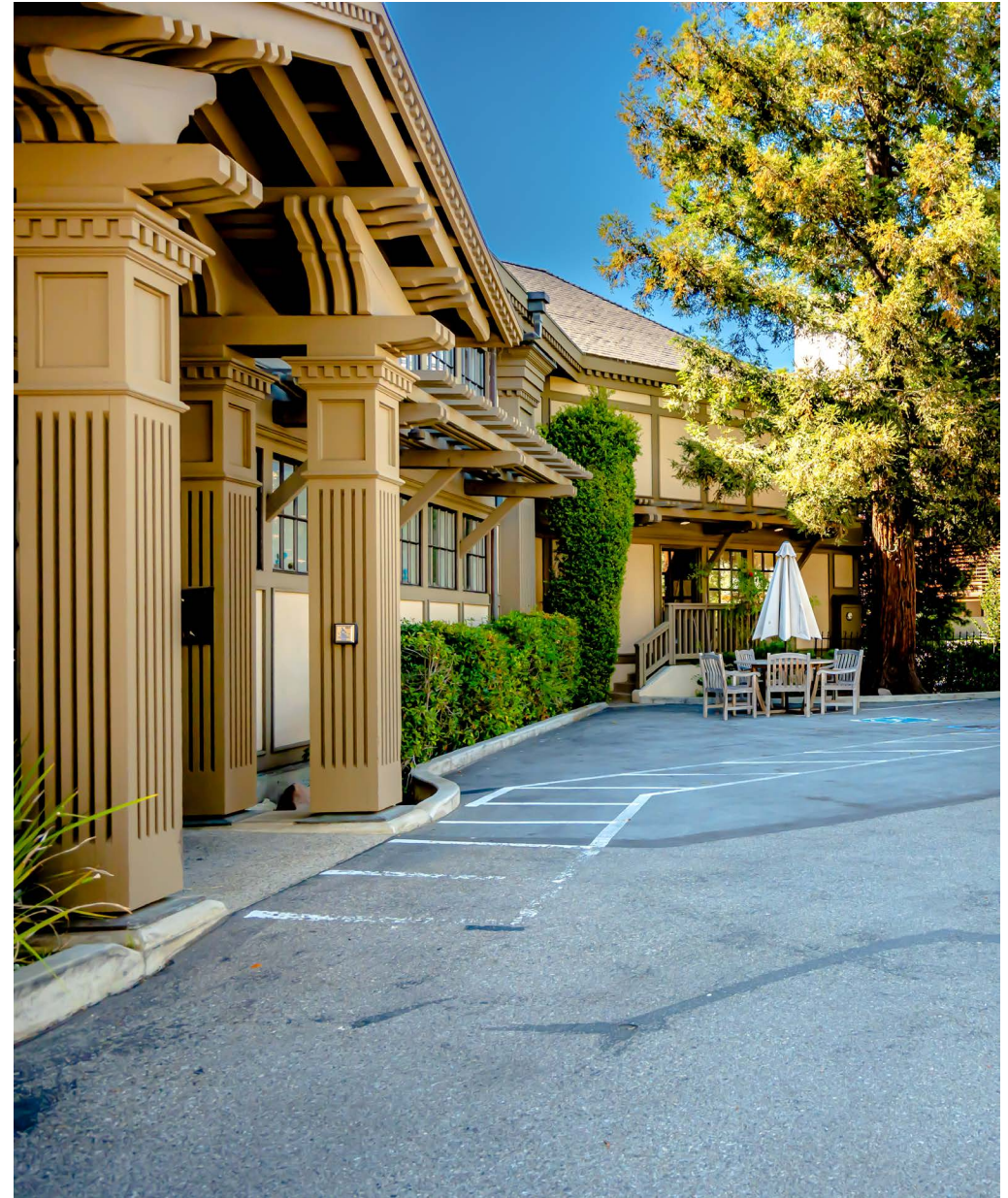
Partner
dre license #01295503
📞 | 650.618.3003
✉ | jon.goldman@prprop.com

JESSE EBNER

Vice President
dre license #02055989
📞 | 650.618.3017
✉ | jesse.ebner@prprop.com

PROPERTY DESCRIPTION

- Single-Tenant Office Building
- Excellent Location in California Ave Business District
- Private On-Site Parking Lot
- Four Conference Rooms
- Two Meeting Rooms / Private Offices
- Large Kitchenette & Break Room
- Expansive Open Desk Space
- Mezzanine with Great Natural Light
- Walking Distance to Cal Ave Restaurants and CalTrain Station
- Available September 1, 2022

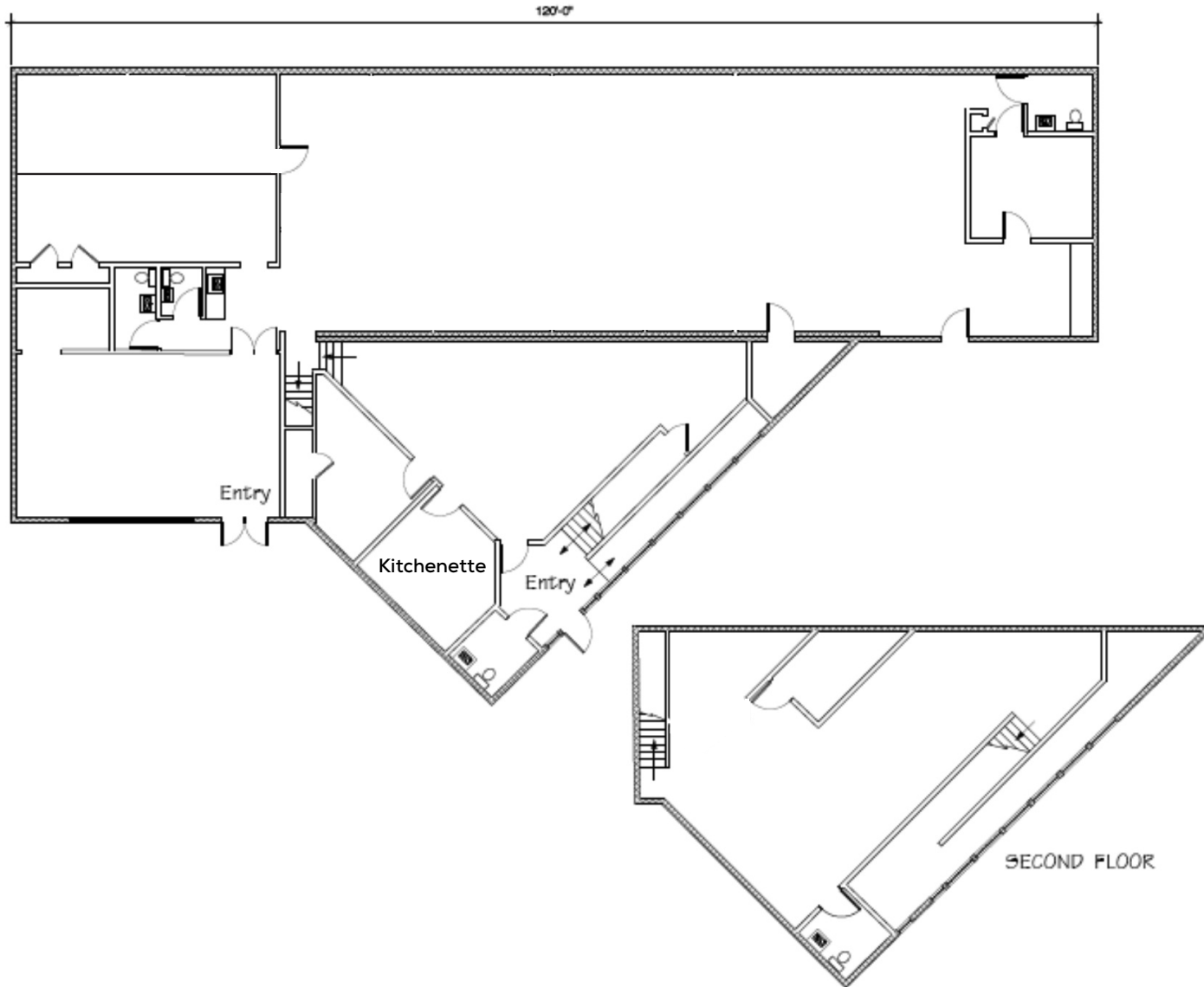


BRAD EHIKIAN
Partner
dre license #01736391
📞 | 650.618.3001
✉ | brad.ehikian@prprop.com

JON GOLDMAN
Partner
dre license #01295503
📞 | 650.618.3003
✉ | jon.goldman@prprop.com

JESSE EBNER
Vice President
dre license #02055989
📞 | 650.618.3017
✉ | jesse.ebner@prprop.com

FLOOR PLAN



BRAD EHIKIAN
Partner
dre license #01736391
☎ | 650.618.3001
✉ | brad.ehikian@prprop.com

JON GOLDMAN
Partner
dre license #01295503
☎ | 650.618.3003
✉ | jon.goldman@prprop.com

JESSE EBNER
Vice President
dre license #02055989
☎ | 650.618.3017
✉ | jesse.ebner@prprop.com

AMENITIES AERIAL



KELLY-MOORE
PAINTS

xfinity

AT&T

El Camino Real (32,600 VPD)

410 Sherman Ave,
Palo Alto

PASTIS
RESTAURANT

LIZZY'S
BROOKLYN
BAGELS

LA BODEGUITA
DEL MEDIO

citibank

WELLS
FARGO

BEET
CAFE

CAFFE
RIACE

CHIPOTLE
MEXICAN GRILL

Starbucks

Local
Kitchens

zareen's

Mediterranean
WRAPS

Lotus Thai Bistro

Talico

ANTONIO'S
NUT HOUSE

pure barre

Baumé

CALAVE

techCU
TECHNOLOGY CREDIT UNION

PIZZA
Chicago

Shekoh Confections
Artisanal Chocolates

Park Blvd

LEGENDS

California Ave

Avalon

ZombieRUNNER
Coffee

THE PORT
OF PERI PERI

Printers Cafe
(Palo Alto, CA)

MOLLIE STONE'S
MARKETS

Palo Alto Sol

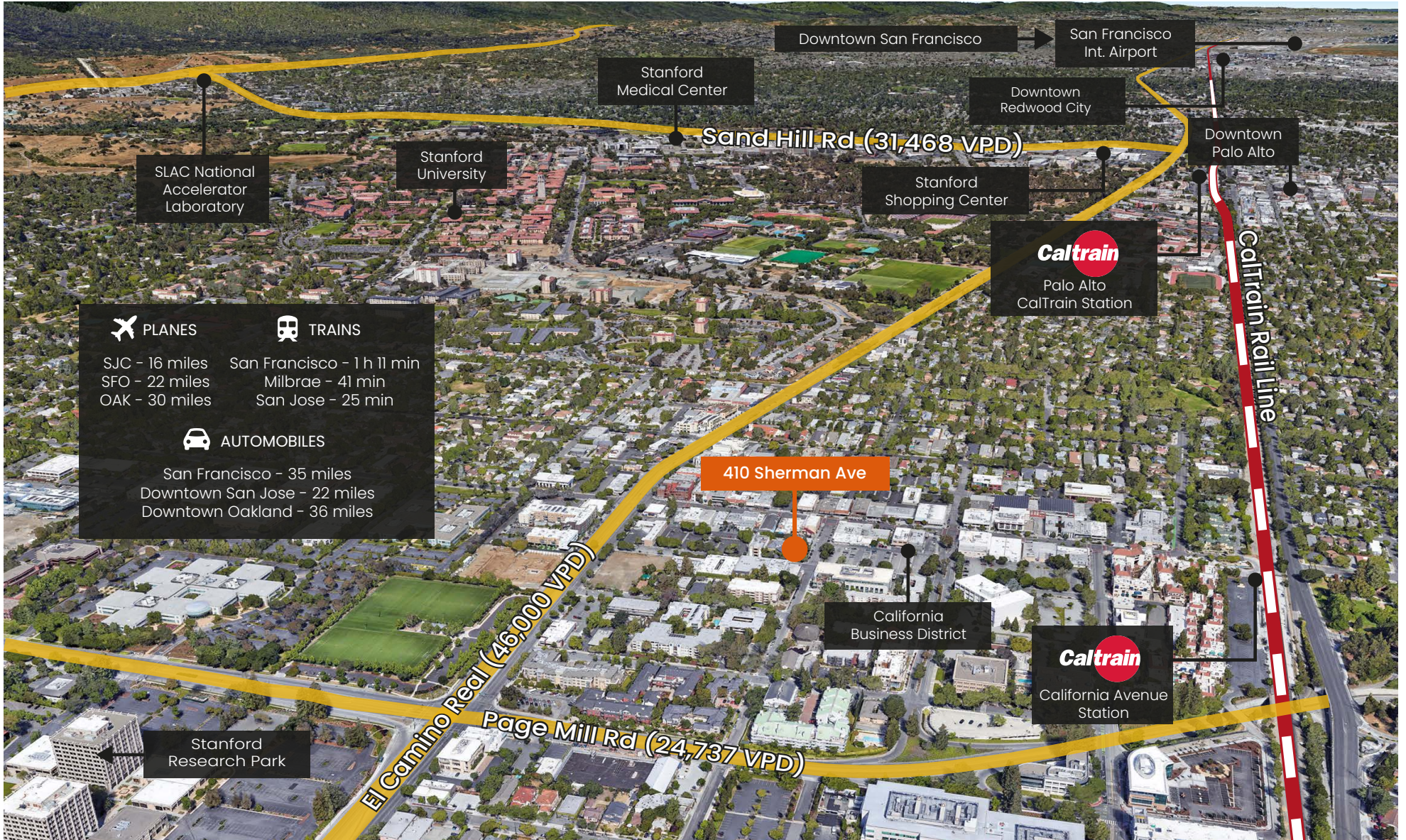
NATURAL
ORGANIC
FOODS

BANK OF WEST
BNP PARIBAS

Terun
PALO ALTO

Caltrain

TRANSPORTATION AERIAL



BRAD EHIKIAN
 Partner
 dre license #01736391
 ☎ | 650.618.3001
 ✉ | brad.ehikian@prprop.com

JON GOLDMAN
 Partner
 dre license #01295503
 ☎ | 650.618.3003
 ✉ | jon.goldman@prprop.com

JESSE EBNER
 Vice President
 dre license #02055989
 ☎ | 650.618.3017
 ✉ | jesse.ebner@prprop.com